

PHILIPPINE BIDDING DOCUMENTS

**Procurement of
INFRASTRUCTURE
PROJECTS**

Government of the Republic of the Philippines

**CONSTRUCTION OF BUILDING/PROCESSING
CENTER FOR QUILING NORTE PEANUT
PROCESSORS ASSOCIATION, #16-N QUILING,
CITY OF BATAC**

**Sixth Edition
July 2020**

Preface

These Philippine Bidding Documents (PBDs) for the procurement of Infrastructure Projects (hereinafter referred to also as the “Works”) through Competitive Bidding have been prepared by the Government of the Philippines for use by all branches, agencies, departments, bureaus, offices, or instrumentalities of the government, including government-owned and/or -controlled corporations, government financial institutions, state universities and colleges, local government units, and autonomous regional government. The procedures and practices presented in this document have been developed through broad experience, and are for mandatory use in projects that are financed in whole or in part by the Government of the Philippines or any foreign government/foreign or international financing institution in accordance with the provisions of the 2016 revised Implementing Rules and Regulations (IRR) of Republic Act (RA) No. 9184.

The PBDs are intended as a model for admeasurements (unit prices or unit rates in a bill of quantities) types of contracts, which are the most common in Works contracting.

The Bidding Documents shall clearly and adequately define, among others: (i) the objectives, scope, and expected outputs and/or results of the proposed contract; (ii) the eligibility requirements of Bidders; (iii) the expected contract duration; and (iv) the obligations, duties, and/or functions of the winning Bidder.

Care should be taken to check the relevance of the provisions of the PBDs against the requirements of the specific Works to be procured. If duplication of a subject is inevitable in other sections of the document prepared by the Procuring Entity, care must be exercised to avoid contradictions between clauses dealing with the same matter.

Moreover, each section is prepared with notes intended only as information for the Procuring Entity or the person drafting the Bidding Documents. They shall not be included in the final documents. The following general directions should be observed when using the documents:

- a. All the documents listed in the Table of Contents are normally required for the procurement of Infrastructure Projects. However, they should be adapted as necessary to the circumstances of the particular Project.
- b. Specific details, such as the “*name of the Procuring Entity*” and “*address for bid submission,*” should be furnished in the Instructions to Bidders, Bid Data Sheet, and Special Conditions of Contract. The final documents should contain neither blank spaces nor options.
- c. This Preface and the footnotes or note in italics included in the Invitation to Bid, BDS, General Conditions of Contract, Special Conditions of Contract, Specifications, Drawings, and Bill of Quantities are not part of the text of the final document, although they contain instructions that the Procuring Entity should strictly follow.
- d. The cover should be modified as required to identify the Bidding Documents as to the names of the Project, Contract, and Procuring Entity, in addition to date of issue.
- e. Modifications for specific Procurement Project details should be provided in the Special Conditions of Contract as amendments to the Conditions of Contract. For easy completion, whenever reference has to be made to specific clauses in the Bid Data Sheet or Special Conditions of Contract, these terms shall be printed in bold typeface on Sections I (Instructions to Bidders) and III (General Conditions of Contract), respectively.

- f. For guidelines on the use of Bidding Forms and the procurement of Foreign-Assisted Projects, these will be covered by a separate issuance of the Government Procurement Policy Board.

TABLE OF CONTENTS

Glossary of Terms, Abbreviations, and Acronyms	5
Section I. Invitation to Bid	7
Section II. Instructions to Bidders	10
1. Scope of Bid	11
2. Funding Information	11
3. Bidding Requirements.....	11
4. Corrupt, Fraudulent, Collusive, Coercive, and Obstructive Practices.....	11
5. Eligible Bidders	11
6. Origin of Associated Goods.....	12
7. Subcontracts.....	12
8. Pre-Bid Conference.....	12
9. Clarification and Amendment of Bidding Documents.....	12
10. Documents Comprising the Bid: Eligibility and Technical Components	12
11. Documents Comprising the Bid: Financial Component.....	13
12. Alternative Bids	13
13. Bid Prices.....	13
14. Bid and Payment Currencies	13
15. Bid Security	14
16. Sealing and Marking of Bids	14
17. Deadline for Submission of Bids	14
18. Opening and Preliminary Examination of Bids	14
19. Detailed Evaluation and Comparison of Bids.....	14
20. Post Qualification.....	15
21. Signing of the Contract.....	15
Section III. Bid Data Sheet	16
Section IV. General Conditions of Contract	18
1. Scope of Contract.....	19
2. Sectional Completion of Works.....	19
3. Possession of Site.....	19
4. The Contractor's Obligations.....	19
5. Performance Security	19
6. Site Investigation Reports.....	20
7. Warranty	20
8. Liability of the Contractor	20
9. Termination for Other Causes.....	20
10. Dayworks.....	20
11. Program of Work	20

12. Instructions, Inspections and Audits	21
13. Advance Payment	21
14. Progress Payments	21
15. Operating and Maintenance Manuals.....	21
Section V. Special Conditions of Contract.....	22
Section VI. Specifications	24
Section VII. Drawings	37
Section VIII. Bill of Quantities	46
Section IX. Checklist of Technical and Financial Documents	50

Glossary of Terms, Abbreviations, and Acronyms

ABC – Approved Budget for the Contract.

ARCC – Allowable Range of Contract Cost.

BAC – Bids and Awards Committee.

Bid – A signed offer or proposal to undertake a contract submitted by a bidder in response to and in consonance with the requirements of the bidding documents. Also referred to as *Proposal* and *Tender*. (2016 revised IRR, Section 5[c])

Bidder – Refers to a contractor, manufacturer, supplier, distributor and/or consultant who submits a bid in response to the requirements of the Bidding Documents. (2016 revised IRR, Section 5[d])

Bidding Documents – The documents issued by the Procuring Entity as the bases for bids, furnishing all information necessary for a prospective bidder to prepare a bid for the Goods, Infrastructure Projects, and/or Consulting Services required by the Procuring Entity. (2016 revised IRR, Section 5[e])

BIR – Bureau of Internal Revenue.

BSP – Bangko Sentral ng Pilipinas.

CDA – Cooperative Development Authority.

Consulting Services – Refer to services for Infrastructure Projects and other types of projects or activities of the GOP requiring adequate external technical and professional expertise that are beyond the capability and/or capacity of the GOP to undertake such as, but not limited to: (i) advisory and review services; (ii) pre-investment or feasibility studies; (iii) design; (iv) construction supervision; (v) management and related services; and (vi) other technical services or special studies. (2016 revised IRR, Section 5[i])

Contract – Refers to the agreement entered into between the Procuring Entity and the Supplier or Manufacturer or Distributor or Service Provider for procurement of Goods and Services; Contractor for Procurement of Infrastructure Projects; or Consultant or Consulting Firm for Procurement of Consulting Services; as the case may be, as recorded in the Contract Form signed by the parties, including all attachments and appendices thereto and all documents incorporated by reference therein.

Contractor – is a natural or juridical entity whose proposal was accepted by the Procuring Entity and to whom the Contract to execute the Work was awarded. Contractor as used in these Bidding Documents may likewise refer to a supplier, distributor, manufacturer, or consultant.

CPI – Consumer Price Index.

DOLE – Department of Labor and Employment.

DTI – Department of Trade and Industry.

Foreign-funded Procurement or Foreign-Assisted Project – Refers to procurement whose funding source is from a foreign government, foreign or international financing institution as specified in the Treaty or International or Executive Agreement. (2016 revised IRR, Section 5[b]).

GFI – Government Financial Institution.

GOCC – Government-owned and/or –controlled corporation.

Goods – Refer to all items, supplies, materials and general support services, except Consulting Services and Infrastructure Projects, which may be needed in the transaction of public businesses or in the pursuit of any government undertaking, project or activity, whether in the nature of equipment, furniture, stationery, materials for construction, or personal property of any kind, including non-personal or contractual services such as the repair and maintenance of equipment and furniture, as well as trucking, hauling, janitorial, security, and related or analogous services, as well as procurement of materials and supplies provided by the Procuring Entity for such services. The term “related” or “analogous services” shall include, but is not limited to, lease or purchase of office space, media advertisements, health maintenance services, and other services essential to the operation of the Procuring Entity. (2016 revised IRR, Section 5[r])

GOP – Government of the Philippines.

Infrastructure Projects – Include the construction, improvement, rehabilitation, demolition, repair, restoration or maintenance of roads and bridges, railways, airports, seaports, communication facilities, civil works components of information technology projects, irrigation, flood control and drainage, water supply, sanitation, sewerage and solid waste management systems, shore protection, energy/power and electrification facilities, national buildings, school buildings, hospital buildings, and other related construction projects of the government. Also referred to as *civil works or works*. (2016 revised IRR, Section 5[u])

LGUs – Local Government Units.

NFCC – Net Financial Contracting Capacity.

NGA – National Government Agency.

PCAB – Philippine Contractors Accreditation Board.

PhilGEPS - Philippine Government Electronic Procurement System.

Procurement Project – refers to a specific or identified procurement covering goods, infrastructure project or consulting services. A Procurement Project shall be described, detailed, and scheduled in the Project Procurement Management Plan prepared by the agency which shall be consolidated in the procuring entity's Annual Procurement Plan. (GPPB Circular No. 06-2019 dated 17 July 2019)

PSA – Philippine Statistics Authority.

SEC – Securities and Exchange Commission.

SLCC – Single Largest Completed Contract.

UN – United Nations.

Section I. Invitation to Bid

Notes on the Invitation to Bid

The Invitation to Bid (IB) provides information that enables potential Bidders to decide whether to participate in the procurement at hand. The IB shall be posted in accordance with Section 21.2 of the 2016 revised IRR of RA No. 9184.

Apart from the essential items listed in the Bidding Documents, the IB should also indicate the following:

- a. The date of availability of the Bidding Documents, which shall be from the time the IB is first advertised/posted until the deadline for the submission and receipt of bids;
- b. The place where the Bidding Documents may be acquired or the website where it may be downloaded;
- c. The deadline for the submission and receipt of bids; and
- d. Any important bid evaluation criteria.

The IB should be incorporated into the Bidding Documents. The information contained in the IB must conform to the Bidding Documents and in particular to the relevant information in the Bid Data Sheet.



Republic of the Philippines
Province of Ilocos Norte
CITY GOVERNMENT OF BATAC

Invitation to Bid for *Construction of Building/Processing Center for Quiling Norte Peanut Processors Association, #16-N Quiling, City of Batac, Ilocos Norte*

1. The *City Government of Batac*, through the *RA 7171 – FY 2017* intends to apply the sum of **Three Million Four Hundred Thirty-two Thousand Three Hundred Thirty-five Pesos and Two Hundredths Centavos (3,432,335.02)** being the Approved Budget for the Contract (ABC) to payments under the contract for *Construction of Building/Processing Center for Quiling Norte Peanut Processors Association, #16-N Quiling, City of Batac, Ilocos Norte with Project Identification Number: CGB-2024-PB-01-005*. Bids received in excess of the ABC shall be automatically rejected at bid opening.
2. The *City Government of Batac* now invites bids for the above Procurement Project. Completion of the Works is required **One Hundred Twenty-two (122) calendar days**. Bidders should have completed a contract similar to the Project. The description of an eligible bidder is contained in the Bidding Documents, particularly, in Section II (Instructions to Bidders).
3. Bidding will be conducted through open competitive bidding procedures using non-discretionary “*pass/fail*” criterion as specified in the 2016 revised Implementing Rules and Regulations (IRR) of Republic Act (RA) No. 9184.
4. Interested bidders may obtain further information from *City Government of Batac* and inspect the Bidding Documents at the address given below from **8:00am to 5:00pm**.
5. A complete set of Bidding Documents may be acquired by interested bidders on **January 17, 2024 (8:00AM to 5:00 PM) to February 07, 2024 (8:00 AM to 12:00 NN)** from given address and website/s below *and upon payment of the applicable fee for the Bidding Documents, pursuant to the latest Guidelines issued by the GPPB, in the amount of Php 5,000.00*. The Procuring Entity shall allow the bidder to present its proof of payment for the fees in person, by facsimile, or through electronic means
6. The *City Government of Batac* will hold a Pre-Bid Conference¹ on **January 26, 2024 at 3:30** in the afternoon at the BAC Office, 3rd Floor City Hall Building, which shall be open to prospective bidders.
7. Bids must be duly received by the BAC Secretariat through manual submission at the office address as indicated below on or before **February 07, 2024 at 12:00 NN**. Late bids shall not be accepted.
8. All bids must be accompanied by a bid security in any of the acceptable forms and in the amount stated in **ITB Clause 16**.

¹ May be deleted in case the ABC is less than One Million Pesos (PhP1,000,000) where the Procuring Entity may not hold a pre-bid conference.

9. Bid opening shall be on **February 07, 2024** at BAC Office 3rd Floor City Hall Building. Bids will be opened in the presence of the or its authorized representatives (with his/her authorization) who choose to attend the activity.
10. The *City Government of Batac* reserves the right to reject any and all bids, declare a failure of bidding, or not award the contract at any time prior to contract award in accordance with Sections 35.6 and 41 of the 2016 revised Implementing Rules and Regulations (IRR) of RA No. 9184, without thereby incurring any liability to the affected bidder or bidders.
11. For further information, please refer to:

ENGR. MICHELLE G. MANUEL
BAC Secretariat Head - Infrastructure
BAC Office 3rd Floor, City Hall Building
City Government of Batac
Washington Street, Brgy. #1-S Valdez
City of Batac, Ilocos Norte 2906
Email: bacbatacity@gmail.com
Tel.No.: (077) 792-2060

12. You may visit the following websites:

For downloading of Bidding Documents: *you may visit www.batac.gov.ph*

MR. MARLON F. SORIA
BAC Chairman

Section II. Instructions to Bidders

Notes on the Instructions to Bidders

This Section on the Instruction to Bidders (ITB) provides the information necessary for bidders to prepare responsive bids, in accordance with the requirements of the Procuring Entity. It also provides information on bid submission, eligibility check, opening and evaluation of bids, post-qualification, and on the award of contract.

1. Scope of Bid

The Procuring Entity, *City Government of Batac* invites Bids for the **Construction of Building/Processing Center for Quiling Norte Peanut Processors Association, #16-N Quiling, City of Batac, Ilocos Norte**, with **Identification Number: CGB-2024-PB-01-005**.

The Procurement Project (“**Construction of Building**”) is for the construction of Works, as described in Section VI (Specifications).

2. Funding Information

2.1. The GOP through the source of funding as indicated below in the amount of **Php 3,432,335.02**.

2.2. The source of funding is:
RA 7171 – FY 2017.

3. Bidding Requirements

The Bidding for the Project shall be governed by all the provisions of RA No. 9184 and its 2016 revised IRR, including its Generic Procurement Manual and associated policies, rules and regulations as the primary source thereof, while the herein clauses shall serve as the secondary source thereof.

Any amendments made to the IRR and other GPPB issuances shall be applicable only to the ongoing posting, advertisement, or invitation to bid by the BAC through the issuance of a supplemental or bid bulletin.

The Bidder, by the act of submitting its Bid, shall be deemed to have inspected the site, determined the general characteristics of the contracted Works and the conditions for this Project, such as the location and the nature of the work; (b) climatic conditions; (c) transportation facilities; (c) nature and condition of the terrain, geological conditions at the site communication facilities, requirements, location and availability of construction aggregates and other materials, labor, water, electric power and access roads; and (d) other factors that may affect the cost, duration and execution or implementation of the contract, project, or work and examine all instructions, forms, terms, and project requirements in the Bidding Documents.

4. Corrupt, Fraudulent, Collusive, Coercive, and Obstructive Practices

The Procuring Entity, as well as the Bidders and Contractors, shall observe the highest standard of ethics during the procurement and execution of the contract. They or through an agent shall not engage in corrupt, fraudulent, collusive, coercive, and obstructive practices defined under Annex “I” of the 2016 revised IRR of RA No. 9184 or other integrity violations in competing for the Project.

5. Eligible Bidders

5.1. Only Bids of Bidders found to be legally, technically, and financially capable will be evaluated.

5.2. The Bidder must have an experience of having completed a Single Largest Completed Contract (SLCC) that is similar to this Project, equivalent to at least fifty percent (50%) of the ABC adjusted, if necessary, by the Bidder to current prices using the PSA’s CPI, except under conditions provided for in Section 23.4.2.4 of the 2016 revised IRR of RA No. 9184.

A contract is considered to be “similar” to the contract to be bid if it has the major categories of work stated in the **BDS**.

- 5.3. For Foreign-funded Procurement, the Procuring Entity and the foreign government/foreign or international financing institution may agree on another track record requirement, as specified in the Bidding Document prepared for this purpose.
- 5.4. The Bidders shall comply with the eligibility criteria under Section 23.4.2 of the 2016 IRR of RA No. 9184.

6. Origin of Associated Goods

There is no restriction on the origin of Goods other than those prohibited by a decision of the UN Security Council taken under Chapter VII of the Charter of the UN.

7. Subcontracts

- 7.1. The Bidder may subcontract portions of the Project to the extent allowed by the Procuring Entity as stated herein, but in no case more than fifty percent (50%) of the Project.

The Procuring Entity has prescribed that:

- a. Subcontracting is not allowed**

8. Pre-Bid Conference

The Procuring Entity will hold a pre-bid conference for this Project on the **January 26, 2024** at 3:00 in the afternoon at BAC Office 3rd Floor, City Hall Building, City Government of Batac and/or through videoconferencing/webcasting as indicated in paragraph 6 of the **IB**.

9. Clarification and Amendment of Bidding Documents

Prospective bidders may request for clarification on and/or interpretation of any part of the Bidding Documents. Such requests must be in writing and received by the Procuring Entity, either at its given address or through electronic mail indicated in the **IB**, at least ten (10) calendar days before the deadline set for the submission and receipt of Bids.

10. Documents Comprising the Bid: Eligibility and Technical Components

- 10.1. The first envelope shall contain the eligibility and technical documents of the Bid as specified in **Section IX. Checklist of Technical and Financial Documents**.
- 10.2. If the eligibility requirements or statements, the bids, and all other documents for submission to the BAC are in foreign language other than English, it must be accompanied by a translation in English, which shall be authenticated by the appropriate Philippine foreign service establishment, post, or the equivalent office having jurisdiction over the foreign bidder’s affairs in the Philippines. For Contracting Parties to the Apostille Convention, only the translated documents shall be authenticated through an apostille pursuant to GPPB

Resolution No. 13-2019 dated 23 May 2019. The English translation shall govern, for purposes of interpretation of the bid.

- 10.3. A valid PCAB License is required, and in case of joint ventures, a valid special PCAB License, and registration for the type and cost of the contract for this Project. Any additional type of Contractor license or permit shall be indicated in the **BDS**.
- 10.4. A List of Contractor's key personnel (e.g., Project Manager, Project Engineers, Materials Engineers, and Foremen) assigned to the contract to be bid, with their complete qualification and experience data shall be provided. These key personnel must meet the required minimum years of experience set in the **BDS**.
- 10.5. A List of Contractor's major equipment units, which are owned, leased, and/or under purchase agreements, supported by proof of ownership, certification of availability of equipment from the equipment lessor/vendor for the duration of the project, as the case may be, must meet the minimum requirements for the contract set in the **BDS**.

11. Documents Comprising the Bid: Financial Component

- 11.1. The second bid envelope shall contain the financial documents for the Bid as specified in **Section IX. Checklist of Technical and Financial Documents**.
- 11.2. Any bid exceeding the ABC indicated in paragraph 1 of the **IB** shall not be accepted.
- 11.3. For Foreign-funded procurement, a ceiling may be applied to bid prices provided the conditions are met under Section 31.2 of the 2016 revised IRR of RA No. 9184.

12. Alternative Bids

Bidders shall submit offers that comply with the requirements of the Bidding Documents, including the basic technical design as indicated in the drawings and specifications. Unless there is a value engineering clause in the **BDS**, alternative Bids shall not be accepted.

13. Bid Prices

All bid prices for the given scope of work in the Project as awarded shall be considered as fixed prices, and therefore not subject to price escalation during contract implementation, except under extraordinary circumstances as determined by the NEDA and approved by the GPPB pursuant to the revised Guidelines for Contract Price Escalation guidelines.

14. Bid and Payment Currencies

- 14.1. Bid prices may be quoted in the local currency or tradeable currency accepted by the BSP at the discretion of the Bidder. However, for purposes of bid evaluation, Bids denominated in foreign currencies shall be converted to Philippine currency based on the exchange rate as published in the BSP reference rate bulletin on the day of the bid opening.
- 14.2. *Payment of the contract price shall be made in:*

- a. Philippine Pesos.

15. Bid Security

- 15.1. The Bidder shall submit a Bid Securing Declaration or any form of Bid Security in the amount indicated in the **BDS**, which shall be not less than the percentage of the ABC in accordance with the schedule in the **BDS**.
- 15.2. The Bid and bid security shall be valid until *120 days*. Any bid not accompanied by an acceptable bid security shall be rejected by the Procuring Entity as non-responsive.

16. Sealing and Marking of Bids

Each Bidder shall submit one copy of the first and second components of its Bid.

The Procuring Entity may request additional hard copies and/or electronic copies of the Bid. However, failure of the Bidders to comply with the said request shall not be a ground for disqualification.

If the Procuring Entity allows the submission of bids through online submission to the given website or any other electronic means, the Bidder shall submit an electronic copy of its Bid, which must be digitally signed. An electronic copy that cannot be opened or is corrupted shall be considered non-responsive and, thus, automatically disqualified.

17. Deadline for Submission of Bids

The Bidders shall submit on the specified date and time and either at its physical address or through online submission as indicated in paragraph 7 of the **IB**.

18. Opening and Preliminary Examination of Bids

- 18.1. The BAC shall open the Bids in public at the time, on the date, and at the place specified in paragraph 9 of the **IB**. The Bidders' representatives who are present shall sign a register evidencing their attendance. In case videoconferencing, webcasting or other similar technologies will be used, attendance of participants shall likewise be recorded by the BAC Secretariat.

In case the Bids cannot be opened as scheduled due to justifiable reasons, the rescheduling requirements under Section 29 of the 2016 revised IRR of RA No. 9184 shall prevail.

- 18.2. The preliminary examination of Bids shall be governed by Section 30 of the 2016 revised IRR of RA No. 9184.

19. Detailed Evaluation and Comparison of Bids

- 19.1. The Procuring Entity's BAC shall immediately conduct a detailed evaluation of all Bids rated "*passed*" using non-discretionary pass/fail criteria. The BAC shall consider the conditions in the evaluation of Bids under Section 32.2 of 2016 revised IRR of RA No. 9184.
- 19.2. If the Project allows partial bids, all Bids and combinations of Bids as indicated in the **BDS** shall be received by the same deadline and opened and evaluated simultaneously so as to determine the Bid or combination of Bids offering the

lowest calculated cost to the Procuring Entity. Bid Security as required by **ITB** Clause 15 shall be submitted for each contract (lot) separately.

- 19.3. In all cases, the NFCC computation pursuant to Section 23.4.2.6 of the 2016 revised IRR of RA No. 9184 must be sufficient for the total of the ABCs for all the lots participated in by the prospective Bidder.

20. Post Qualification

Within a non-extendible period of five (5) calendar days from receipt by the Bidder of the notice from the BAC that it submitted the Lowest Calculated Bid, the Bidder shall submit its latest income and business tax returns filed and paid through the BIR Electronic Filing and Payment System (eFPS), and other appropriate licenses and permits required by law and stated in the **BDS**.

21. Signing of the Contract

The documents required in Section 37.2 of the 2016 revised IRR of RA No. 9184 shall form part of the Contract. Additional Contract documents are indicated in the **BDS**.

Section III. Bid Data Sheet

Notes on the Bid Data Sheet (BDS)

The Bid Data Sheet (BDS) consists of provisions that supplement, amend, or specify in detail, information, or requirements included in the ITB found in Section II, which are specific to each procurement.

This Section is intended to assist the Procuring Entity in providing the specific information in relation to corresponding clauses in the ITB and has to be prepared for each specific procurement.

The Procuring Entity should specify in the BDS information and requirements specific to the circumstances of the Procuring Entity, the processing of the procurement, and the bid evaluation criteria that will apply to the Bids. In preparing the BDS, the following aspects should be checked:

- a. Information that specifies and complements provisions of the ITB must be incorporated.
- b. Amendments and/or supplements, if any, to provisions of the ITB as necessitated by the circumstances of the specific procurement, must also be incorporated.

Bid Data Sheet

ITB Clause																																		
5.2	For this purpose, contracts similar to the Project refer to contracts which have the same major categories of work, which shall be: <i>Construction of Multi-Purpose Building</i>																																	
7.1	<i>Sub-contracting is not allowed.</i>																																	
10.3	<i>None</i>																																	
10.4	The key personnel must meet the required minimum years of experience set below: <table border="1" style="width: 100%; border-collapse: collapse;"> <thead> <tr> <th style="text-align: left;"><u>Key Personnel</u></th> <th style="text-align: left;"><u>General Experience</u></th> <th style="text-align: left;"><u>Relevant Experience</u></th> </tr> </thead> <tbody> <tr> <td>Project Engineer</td> <td>General Construction</td> <td>5 years</td> </tr> <tr> <td>Materials Engineer</td> <td>General Construction</td> <td>1 year</td> </tr> <tr> <td>Construction Foreman</td> <td>General Construction</td> <td>5 years</td> </tr> <tr> <td>Skilled Worker</td> <td>General Construction</td> <td>5 years</td> </tr> <tr> <td>Unskilled Laborer</td> <td>General Construction</td> <td>3 years</td> </tr> <tr> <td>Safety Officer II</td> <td>General Construction</td> <td>1 year</td> </tr> </tbody> </table>	<u>Key Personnel</u>	<u>General Experience</u>	<u>Relevant Experience</u>	Project Engineer	General Construction	5 years	Materials Engineer	General Construction	1 year	Construction Foreman	General Construction	5 years	Skilled Worker	General Construction	5 years	Unskilled Laborer	General Construction	3 years	Safety Officer II	General Construction	1 year												
<u>Key Personnel</u>	<u>General Experience</u>	<u>Relevant Experience</u>																																
Project Engineer	General Construction	5 years																																
Materials Engineer	General Construction	1 year																																
Construction Foreman	General Construction	5 years																																
Skilled Worker	General Construction	5 years																																
Unskilled Laborer	General Construction	3 years																																
Safety Officer II	General Construction	1 year																																
10.5	The minimum major equipment requirements are the following: <table border="1" style="width: 100%; border-collapse: collapse;"> <thead> <tr> <th style="text-align: center;"><u>Equipment</u></th> <th style="text-align: center;"><u>Capacity</u></th> <th style="text-align: center;"><u>Number of Units</u></th> </tr> </thead> <tbody> <tr> <td style="text-align: center;">Dump truck</td> <td style="text-align: center;">12 cu. yd</td> <td style="text-align: center;">1</td> </tr> <tr> <td style="text-align: center;">Backhoe</td> <td style="text-align: center;">0.80 cu.m.</td> <td style="text-align: center;">1</td> </tr> <tr> <td style="text-align: center;">Bar cutter</td> <td></td> <td style="text-align: center;">1</td> </tr> <tr> <td style="text-align: center;">Bar bender</td> <td></td> <td style="text-align: center;">1</td> </tr> <tr> <td style="text-align: center;">Oxygen/Acetylene Cutter</td> <td></td> <td style="text-align: center;">1</td> </tr> <tr> <td style="text-align: center;">Cutting Outfit</td> <td></td> <td style="text-align: center;">1</td> </tr> <tr> <td style="text-align: center;">Welding Machine</td> <td style="text-align: center;">500 amp</td> <td style="text-align: center;">1</td> </tr> <tr> <td style="text-align: center;">One Bagger Mixer</td> <td style="text-align: center;">4-6 cu. ft/min</td> <td style="text-align: center;">1</td> </tr> <tr> <td style="text-align: center;">Concrete Vibrator</td> <td></td> <td style="text-align: center;">1</td> </tr> <tr> <td style="text-align: center;">Plate Compactor</td> <td style="text-align: center;">5 hp</td> <td style="text-align: center;">1</td> </tr> </tbody> </table>	<u>Equipment</u>	<u>Capacity</u>	<u>Number of Units</u>	Dump truck	12 cu. yd	1	Backhoe	0.80 cu.m.	1	Bar cutter		1	Bar bender		1	Oxygen/Acetylene Cutter		1	Cutting Outfit		1	Welding Machine	500 amp	1	One Bagger Mixer	4-6 cu. ft/min	1	Concrete Vibrator		1	Plate Compactor	5 hp	1
<u>Equipment</u>	<u>Capacity</u>	<u>Number of Units</u>																																
Dump truck	12 cu. yd	1																																
Backhoe	0.80 cu.m.	1																																
Bar cutter		1																																
Bar bender		1																																
Oxygen/Acetylene Cutter		1																																
Cutting Outfit		1																																
Welding Machine	500 amp	1																																
One Bagger Mixer	4-6 cu. ft/min	1																																
Concrete Vibrator		1																																
Plate Compactor	5 hp	1																																
12	<i>Value Engineering not allowed.</i>																																	
15.1	The bid security shall be in the form of a Bid Securing Declaration or any of the following forms and amounts: <ul style="list-style-type: none"> a. The amount of not less than 68,646.70 if bid security is in cash, cashier's/manager's check, bank draft/guarantee or irrevocable letter of credit; b. The amount of not less than 171,616.75 if bid security is in Surety Bond. 																																	
19.2	Partial bids are allowed not allowed.																																	
20	<i>None</i>																																	
21	Additional contract documents relevant to the Project that may be required by existing laws and/or the Procuring Entity, such as construction schedule and S-curve, manpower schedule, construction methods, equipment utilization schedule, construction safety and health program approved by the DOLE, and other acceptable tools of project scheduling.																																	

Section IV. General Conditions of Contract

Notes on the General Conditions of Contract

The General Conditions of Contract (GCC) in this Section, read in conjunction with the Special Conditions of Contract in Section V and other documents listed therein, should be a complete document expressing all the rights and obligations of the parties.

Matters governing performance of the Contractor, payments under the contract, or matters affecting the risks, rights, and obligations of the parties under the contract are included in the GCC and Special Conditions of Contract.

Any complementary information, which may be needed, shall be introduced only through the Special Conditions of Contract.

1. **Scope of Contract**

This Contract shall include all such items, although not specifically mentioned, that can be reasonably inferred as being required for its completion as if such items were expressly mentioned herein. All the provisions of RA No. 9184 and its 2016 revised IRR, including the Generic Procurement Manual, and associated issuances, constitute the primary source for the terms and conditions of the Contract, and thus, applicable in contract implementation. Herein clauses shall serve as the secondary source for the terms and conditions of the Contract.

This is without prejudice to Sections 74.1 and 74.2 of the 2016 revised IRR of RA No. 9184 allowing the GPPB to amend the IRR, which shall be applied to all procurement activities, the advertisement, posting, or invitation of which were issued after the effectivity of the said amendment.

2. **Sectional Completion of Works**

If sectional completion is specified in the **Special Conditions of Contract (SCC)**, references in the Conditions of Contract to the Works, the Completion Date, and the Intended Completion Date shall apply to any Section of the Works (other than references to the Completion Date and Intended Completion Date for the whole of the Works).

3. **Possession of Site**

3.1 The Procuring Entity shall give possession of all or parts of the Site to the Contractor based on the schedule of delivery indicated in the **SCC**, which corresponds to the execution of the Works. If the Contractor suffers delay or incurs cost from failure on the part of the Procuring Entity to give possession in accordance with the terms of this clause, the Procuring Entity's Representative shall give the Contractor a Contract Time Extension and certify such sum as fair to cover the cost incurred, which sum shall be paid by Procuring Entity.

3.2 If possession of a portion is not given by the above date, the Procuring Entity will be deemed to have delayed the start of the relevant activities. The resulting adjustments in contract time to address such delay may be addressed through contract extension provided under Annex "E" of the 2016 revised IRR of RA No. 9184.

4. **The Contractor's Obligations**

The Contractor shall employ the key personnel named in the Schedule of Key Personnel indicating their designation, in accordance with **ITB** Clause 10.3 and specified in the **BDS**, to carry out the supervision of the Works.

The Procuring Entity will approve any proposed replacement of key personnel only if their relevant qualifications and abilities are equal to or better than those of the personnel listed in the Schedule.

5. **Performance Security**

5.1. Within ten (10) calendar days from receipt of the Notice of Award from the Procuring Entity but in no case later than the signing of the contract by both parties, the successful Bidder shall furnish the performance security in any of the forms prescribed in Section 39 of the 2016 revised IRR.

5.2. The Contractor, by entering into the Contract with the Procuring Entity, acknowledges the right of the Procuring Entity to institute action pursuant to RA No. 3688 against any subcontractor be they an individual, firm, partnership, corporation, or association supplying the Contractor with labor, materials and/or equipment for the performance of this Contract.

6. Site Investigation Reports

The Contractor, in preparing the Bid, shall rely on any Site Investigation Reports referred to in the SCC supplemented by any information obtained by the Contractor.

7. Warranty

7.1. In case the Contractor fails to undertake the repair works under Section 62.2.2 of the 2016 revised IRR, the Procuring Entity shall forfeit its performance security, subject its property(ies) to attachment or garnishment proceedings, and perpetually disqualify it from participating in any public bidding. All payables of the GOP in his favor shall be offset to recover the costs.

7.2. The warranty against Structural Defects/Failures, except that occasioned-on force majeure, shall cover the period from the date of issuance of the Certificate of Final Acceptance by the Procuring Entity. Specific duration of the warranty is found in the SCC.

8. Liability of the Contractor

Subject to additional provisions, if any, set forth in the SCC, the Contractor's liability under this Contract shall be as provided by the laws of the Republic of the Philippines.

If the Contractor is a joint venture, all partners to the joint venture shall be jointly and severally liable to the Procuring Entity.

9. Termination for Other Causes

Contract termination shall be initiated in case it is determined *prima facie* by the Procuring Entity that the Contractor has engaged, before, or during the implementation of the contract, in unlawful deeds and behaviors relative to contract acquisition and implementation, such as, but not limited to corrupt, fraudulent, collusive, coercive, and obstructive practices as stated in ITB Clause 4.

10. Dayworks

Subject to the guidelines on Variation Order in Annex "E" of the 2016 revised IRR of RA No. 9184, and if applicable as indicated in the SCC, the Dayworks rates in the Contractor's Bid shall be used for small additional amounts of work only when the Procuring Entity's Representative has given written instructions in advance for additional work to be paid for in that way.

11. Program of Work

11.1. The Contractor shall submit to the Procuring Entity's Representative for approval the said Program of Work showing the general methods, arrangements, order, and timing for all the activities in the Works. The submissions of the Program of Work are indicated in the SCC.

11.2. The Contractor shall submit to the Procuring Entity's Representative for approval an updated Program of Work at intervals no longer than the period stated in the **SCC**. If the Contractor does not submit an updated Program of Work within this period, the Procuring Entity's Representative may withhold the amount stated in the **SCC** from the next payment certificate and continue to withhold this amount until the next payment after the date on which the overdue Program of Work has been submitted.

12. Instructions, Inspections and Audits

The Contractor shall permit the GOP or the Procuring Entity to inspect the Contractor's accounts and records relating to the performance of the Contractor and to have them audited by auditors of the GOP or the Procuring Entity, as may be required.

13. Advance Payment

The Procuring Entity shall, upon a written request of the Contractor which shall be submitted as a Contract document, make an advance payment to the Contractor in an amount not exceeding fifteen percent (15%) of the total contract price, to be made in lump sum, or at the most two installments according to a schedule specified in the **SCC**, subject to the requirements in Annex "E" of the 2016 revised IRR of RA No. 9184.

14. Progress Payments

The Contractor may submit a request for payment for Work accomplished. Such requests for payment shall be verified and certified by the Procuring Entity's Representative/Project Engineer. Except as otherwise stipulated in the **SCC**, materials and equipment delivered on the site but not completely put in place shall not be included for payment.

15. Operating and Maintenance Manuals

15.1. If required, the Contractor will provide "as built" Drawings and/or operating and maintenance manuals as specified in the **SCC**.

15.2. If the Contractor does not provide the Drawings and/or manuals by the dates stated above, or they do not receive the Procuring Entity's Representative's approval, the Procuring Entity's Representative may withhold the amount stated in the **SCC** from payments due to the Contractor.

Section V. Special Conditions of Contract

Notes on the Special Conditions of Contract

Similar to the BDS, the clauses in this Section are intended to assist the Procuring Entity in providing contract-specific information in relation to corresponding clauses in the GCC found in Section IV.

The Special Conditions of Contract (SCC) complement the GCC, specifying contractual requirements linked to the special circumstances of the Procuring Entity, the Procuring Entity's country, the sector, and the Works procured. In preparing this Section, the following aspects should be checked:

- a. Information that complements provisions of the GCC must be incorporated.
- b. Amendments and/or supplements to provisions of the GCC as necessitated by the circumstances of the specific purchase, must also be incorporated.

However, no special condition which defeats or negates the general intent and purpose of the provisions of the GCC should be incorporated herein.

Special Conditions of Contract

GCC Clause	
2	<i>The intended completion date is One Hundred Twenty-two (122) calendar days from the Effective Date of the Contract.</i>
4.1	N/A
6	N/A
7.2	Fifteen (15) years.
10	Dayworks are applicable at the rate shown in the Contractor's original Bid.
11.1	The Contractor shall submit the Program of Work to the Procuring Entity's Representative within Seven (7) days of delivery of the Notice of Award.
11.2	N/A
13	The amount of the advance payment <i>shall not exceed 15% of the total contract price and schedule of payment.</i>
14	<i>Not Allowed</i>
15.1	N/A
15.2	N/A

Section VI. Specifications

SECTION VI. SPECIFICATIONS

GENERAL SPECIFICATIONS FOR THE CONSTRUCTION OF:

Project Title : CONSTRUCTION OF BUILDING/PROCESSING CENTER
FOR QUILING NORTE PEANUT PROCESSORS ASSOCIATION
Project Location : Brgy. 16-N Quiling Norte, City of Batac

A. SCOPE OF WORK:

1. The work contemplated under this contract consist of:
 - a) Furnishing all necessary materials, labor and tools for the construction of the project in accordance with the plans and specifications unless otherwise specified.

B. PLANS AND SPECIFICATIONS:

1. The plans and specifications shall be considered as cooperatives and all labor materials in one and not mentioned or indicated in other or vice versa and shall not be done by the contractor as if these are duly mentioned in both.
2. If so, numerical indications appear in the plans, all drawings shall be careful follow according to the scale of the drawing, but if they are not indicated, the numerical rotations must be followed and not the scale of the drawing and specifications, specifications shall govern. In case of discrepancies of the figures or drawings the matter shall be immediately submitted to the project-in-charge before any adjustments shall be made.
3. The owner, contractor or workmen without prior agreement or approval, no changes in the drawing and specifications shall be made.

C. PREPARATION OF THE SITE

C.a. - Workmanship

Site must be properly secured and barricaded in accordance with the Safety and Health procedures. Materials to be delivered at the site must be properly warehoused.

D. EXCAVATION AND BACKFILLING

D.a. - Scope of Work

Filling and backfilling are necessary to bring elevations to finished levels, including furnishing of extra filling materials required.

D.b. - Materials to be of earth or any other materials is free from soft lumps of clay.

D.c. - Where footings and/or foundation occur, use concrete fill for some proportions as specified for footing foundations.

Bd - Where slabs occur, use well compacted earth fill.

P1

E. CONCRETE WORKS

E.a. - Materials

1. Portland Cement: Philippine manufactured conforming to the standard specifications and test for Portland Cement of the AMERICAN SOCIETY FOR TESTING MATERIALS (ASTM) and subsequent revisions thereof.
2. Concrete Aggregates: River gravel, having clean, hard, strong, and durable uncoated particles.
3. Fire aggregates: Sand with similar characteristics, having clean, hard, strong, and durable grains.
4. Water: Water for concrete shall be clean and free from injurious amount of oil, acid, and other deleterious substances, fit for drinking.
5. Concrete for footings, columns and beams shall be Class "A" or 1:2:4 mix.
6. Concrete on slabs on fill shall be class "C" or 1:3:6 mix.

E.b. - Workmanship

All concrete works shall be done in accordance with the specifications for concrete and reinforcements as adopted by the Department of Public Works and Highways.

F. REINFORCING STEEL BARS

F.a. - Materials

Metal reinforcements - Conforms to all the requirements of the standard specifications of the billet steel concrete reinforcement bars of the intermediate grade.

F.b. - Workmanship

Accurately positioned and unless otherwise specified, shall be secured against displacement by using at intersections Ga. 16 G.I tie wire.

F.c. - Please refer to attached manufacturer's specifications for Structural Decking Works.

G. MORTAR

All mortars for cement plaster shall be 1:2 mix, one (1) part cement and two (2) parts sand by volume.

H. CONCRETE HOLLOW BLOCKS

Ga - Materials

Concrete hollow blocks shall be those available in the locality fit for construction, true to size without imperfections or defects which may impair their strength and durability.

Gb - Workmanship

1. At the time of the pouring of concrete for the foundation or footing, the first blocks shall be laid and grouted in the wet concrete setting at least one-half ($\frac{1}{2}$) of the blocks into the wet mixture. The first course shall be carefully levelled and lined as it is laid. Blocks are then laid above the first course in staggered fashion. Vertical reinforcements shall extend to the footing. All concrete hollow blocks shall be laid with cement mortar 1:3 mix.

P2

2. Concrete hollow blocks wall shall be applied with 20 millimeter thick cement plaster finish on the interior and the exterior. Other wall finishes shall be in accordance with the plans and specifications.

3. Concrete hollow blocks shall be soaked one-half (½) hour before plastering and be damped when plastering is done. After the application of the plaster, the plastered walls shall be always kept damped for a period of three(3) days.

H. Exterior Veneer

Ha - Exterior walls shall be 150 mm x 200 mm x 400 mm concrete hollow blocks or as indicated in the drawings.

Hb - Interior partitions shall be 100 mm x 200 mm x 400 mm concrete hollow blocks or as indicated in the drawings.

I. Tile Wainscoting

Ia - Wainscoting of comfort rooms shall be glazed tiles for walling and unglazed non-slip tiles for flooring with the color and design to be chosen by the end-user.

Ib - Workmanship

Thoroughly clean and moisten all concrete or masonry to be applied with tiles and make sure that they are free from dust or dirt before applying mortar.

J. Carpentry and Joinery

Ja - Materials

1. Lumber to be used shall be of the approved quality of the respective kinds required for the various parts of the work; well-seasoned, thoroughly dry and free from all kinds of imperfections.
2. All wood frameworks and other members in contact with concrete shall be anchored with 70 mm C.W. nails all around with the contact surfaces.
3. All exposed nails shall be countersinking.

K. Roofing

Ka - Materials

1. Asphalt Rib-Type for roofing panels. The materials specifications shall be as follows:

Base metal thickness	: 0.400 mm
Feed width	: 1.032 mm
Zinc coating	: 215 g/sq. m.
Effective coverage	: 1000 mm
Side lapping	: one and a half (1½)

2. All ridge rolls, flashings, gutters and downspouts shall be .400 mm thick pre-painted.

Kb - Workmanship

1. All roofing sheets, ridge rolls, flashings, gutters and downspouts shall be installed according to the manufacturer's specifications. Laying should start from the end opposite the side from where the monsoon wind is coming

from. Lay and install the first sheet with the turned-down edge towards the outside of the area to be covered. Overlap the next sheet to the previous sheet in such a manner that the exposed edge is turned down.

2. The pitch of the roofs should be a minimum of 10% or 1 in 10. Best results can be obtained if the top of the purlins are in one plain, in as much as the sheets come in eave to ridge lengths. All installations shall be free from leaks.
3. To secure a sound and permanent roof with maximum economy, the roof plan should be made as simple as possible. Purlins should be spaced as required or as per manufacturer's specifications with top surface at a common level so that sheets are resting on them evenly.
4. The sheets shall be fastened to the purlins by means of mounting screws or as per manufacturer's specifications.

L. Ceiling

La - Materials

1. All interior ceilings shall be 4.5 mm thick fiber cement board on $\frac{1}{2}$ " x 50 mm metal furring and carrying channel frame spaced at 600 mm on centers bothways.
2. All exterior ceilings shall be 0.40mm thick pre-painted spandrel on 3" x 8' x 0.40mm thk. End-moldings.

M. Windows

Windows shall be powder coated aluminum sliding windows. Provide also 12 mm square bar grilles spaced at 100 mm and in accordance with plans and specifications.

N. Doors

Na - Materials

1. Classroom doors shall be planed type solid tanguile wood, well-seasoned and without cracks. It shall be hollow core flush type with finished thickness of 44 mm and double face.
2. Interior doors shall be hollow core flush type with finished thickness of 44 mm.
3. Framings shall be kiln dried tanguile, while veneer facing shall be 5 mm thick tanguile slice-cut plywood on both faces.
4. Tanguile wood jamb shall be 50 mm x 100 mm wood jamb.

Nb - workmanship

1. Framings shall consist of end tiles, while bottom and top rails shall be made of 31 mm x 120 mm solid pieces lock jointed to each other with at least three intermediate rails for solid pieces, sanded and finished in spray paint.
2. Provide 4 and 3 pieces of 88.4 mm but hinges for door width of 0.80 m or more and door width of less than 0.80 m, respectively.

3. All doors shall be provided with door lock sets according to the specifications of the Designer and as approved by the end-user.

O. Built-in Cabinets

Oa - Materials

Walls for cabinets shall be 19 mm thick plyboard while drawer locks and handles shall be in accordance with the specifications of the Designer and approved by the end-user.

Ob - Workmanship

All cabinets shall be single wall plywood and shall be especially fabricated and finished with fine workmanship, as per detail fitted with drawer lock and handle with two hinges per cabinet door.

P. Plumbing

Pa - General

1. All works included in this section shall be suited to the general conditions of the entire operation.
2. Labor shall include complete installation of the plumbing system including all fixtures.

Pb - Materials

1. The contractor shall with the designer's approval secure all materials and fixtures that will be used in connection with the work.
2. Water supply pipes and fittings shall be Galvanized Iron, Schedule 40, of dimensions as indicated in the plans.
3. Sanitary pipes shall be Polyvinyl Chloride. For pipe sizes below 100 mm in diameter, use Series 1000 and Class 34 for sizes equal and above 100 mm in diameter.
4. Vent pipes shall be 50 mm in diameter ordinary Polyvinyl chloride pipes.
5. Plumbing fixtures shall conform with the manufacturer's specifications with the design and color to be approved by the designer.

Pc - Workmanship

1. All plumbing works shall be in accordance with the rules and regulations of the Philippine Plumbing Code, executed in the best manner and according to standard practices.
2. All pipings and waste shall be embedded in the concrete and masonry works or concealed between partitions. Water tests shall be made before embedding or covering the system.
3. All fixtures shall be installed complete with accessories, such as tank fittings, angle valve, shut-off valve, P-trap, etc.
4. Provisions of the following special fittings:



P5

- a. Valves - Gate valves shall be clamp gate type with iron body and brass trim.
- b. Unions - Unions shall be placed near valves and whenever necessary to facilitate removal of pipes, valve and equipment.
- c. Clean-outs - Sufficient clean-outs with screw caps shall be provided for easy cleaning of the whole system.
- d. Vent - Vent pipes shall be extended fully well above the highest fixture serviced.

Q. Septic Tank

Construction of the septic tank shall be as shown in the plans and specifications.

R. Toilet and Bathroom Fixture and Accessories

Plumbing and fixtures and accessories shall be those of sanitary wares or Philippine standard products or their equivalent or those specified by the Designer and approved by the end-user.

S. Electrical Works

Sa - General

The works consists of furnishing of all materials, labor, tools and equipment and performing all operations in connection with the electrical system as shown on the drawings and conforming with the latest edition of the PHILIPPINE ELECTRICAL CODE, the rules and regulations of the locality and all other works which are necessary to bring the electrical system to operating condition and ready for use by the end-user.

Sb - Materials

- 1. All switch plates shall be standard with bakelite cover.
- 2. All convenience outlets shall be flush duplex type and provide with bakelite cover.
- 3. All electrical conduits fittings shall be smooth walled UPVC as approved by the BUREAU OF PRODUCTS STANDARDS and accepted for use by the PHILIPPINE ELECTRICAL CODE.
- 4. Sizes and type of wirings shall be as plan and specifications.
- 5. Wirings for convenience outlets shall be 3.5 mm² THHN unless otherwise specified.
- 6. Circuit breakers shall be quick make, quick break thermal magnetic trip-indicating and have common trip on all multiple breaker with internal tie mechanism.

Sc-Workmanship

The scope of the work shall include the following:

- 1. the complete lighting and power system from the connection including all outlets, devices, convenience receptacles and switches.
- 2. All circuit breakers, main panel and other power supplies indicated in the plans and specifications.



All wiring placed underground or embedded in concrete or masonry and passing thru partitions shall use UPVC conduits with type THHN wires as conductors unless indicated otherwise and shall terminate at proper boxes and fittings.

The pipes and fittings shall be homogeneous throughout and free from visible cracks, holes and other injurious defects. The inside surfaces shall be smooth for the pulling-in of electrical wires and cables. The pipes shall be uniform in color. The ends shall be clearly cut and square with the axis of the pipe.

T. Steel Works

Ta - General

The works consist of the furnishing of all materials, labor, tools and equipment necessary in the fabrication, erection and installation required to complete all structural steel works indicated in the plans and specifications including cleaning and painting.

Tb - Materials

1. All Structural Steel shapes, plates, rolled and built-up sections shall be ASTM A-36. All Cold Formed Light Gauge Steel Sections shall be ASTM A-245. All arc-welding Electrodes shall be ASTM A-233, E 60 xx or E 70xx.
2. Use angle bars for top and bottom chords, including web members; use light weight C purlins as shown in the plans and as indicated in the specifications.
3. Use mild steel Gusset plates for angle bars joints and all other joints, and all joints shall be fully weld as indicated in the drawings.

Tc - Workmanship

1. Workmanship, erection, fabrication and all installation shall be in accordance with the latest edition of AISC Specifications for Fabrication and Erection of Structural Steel.

2. All welded sections shall develop full strength of the members. The technique of welding employed, appearance and quality for welds made and the method of correcting defective work shall conform to the American Welding Society, Code for Arch-Welding in Building Construction, Section 4, Workmanship.

3. Surfaces to be welded shall be free from loose scale, rust, grease, paint and other foreign materials except that mill scale which withstands vigorous wire brushing may remain. Join surfaces shall be free from fins and tears. Finished members shall be true to line and free from twists, bends and open joints.

4. All painting works shall be done on dry surfaces, free from rust, scale and grease. Steel shall be flame cleaned in the shop to remove mill scale. Surfaces in contact shall be cleaned by effective means but not painted except that contact surfaces of exposed exterior steel shall be painted. All steel surfaces shall receive one coat of primer.

U. Painting Works

Ua - General

This work includes interior and exterior painting and varnishing and finishing of all items as required to produce a finished painting job throughout all the areas affected by the work under this contract, except items which is specifically excluded.

All exposed sections shall be protected while the building is being painted or varnished.



P7

Ub – Preparation of Surface

1. All new concrete shall be allowed to weather for at least two months, or moisture proofed by applying with neutralizer if painted earlier than the weathering period.
2. All new G.I. sheets to be painted shall be applied with Galvawash to remove grease, oil and other surface contaminants before applying primer.
3. All metal surfaces shall be cleaned free of mold seals, rust and foreign matter. Grease shall be scraped with wire brush to sound metal dust.
4. All other surfaces to be painted or varnished shall be cleaned of loose dirt and dust before painting and varnishing.
5. Wood doors, door jambs and cabinets shall be pulled and seal sprayed with automotive lacquer spray.
6. Except as otherwise specified, all paints shall be applied in three (3) coatings. Applications shall be by roller or brush or as per manufacture's specifications and each coating shall be allowed to dry before applying succeeding coatings.

V. Finishing Works

- Wa - All floor finishes shall be in accordance with the plans and specifications.
- Wb – Exterior and interior wall finishes shall be plain cement finish, except as indicated in the plans and specifications.
- Wc – Brick tile veneer shall be as shown in the drawings.

1. All exposed sections shall be protected while the building is being painted or varnished.

G.b. – Preparation of Surface

1. All surfaces to be painted or varnished shall be cleaned of loose dirt and dust before painting and varnishing.
2. Except as otherwise specified, all paints shall be applied in three (3) coatings. Applications shall be by roller or brush or as per manufacture's specifications and each coating shall be allowed to dry before applying succeeding coatings.
3. All paint materials shall be subject to inspection and approval before any such brand shall be used in this painting works.



PR



Republic of the Philippines
 CITY GOVERNMENT OF BACAC
 Mungtung St., 1st Grade, City of Iloilo
 Division of Local Works

PROJECT: CONSTRUCTION OF BUDNINO/PROCESING CENTER FOR DILING-HIBIT PEANUT PROCESSORS ASSOCIATION
 ADDRESS: 414 N. Bay, Ombay, City of Iloilo
 SUBJECT: EQUIPMENT MOBILIZATION AND SCHEDULE

ITEM NO.	ITEM DESCRIPTION	UNIT	QUANTITY	PERCENTAGE	CONSTRUCTION S - CURVE
8.3	Forming and Concrete				
8.3.1	Formal Estimation/Specification				
8.3.1.1	Occupational Safety and Health Program			100%	
8.3.1.2	Application and Demonstration			75%	
8.3.1.3	Structure Evaluation/Commission Manual Description			70%	
8.3.1.4	Procurement from Structure Evaluation			85%	
8.3.1.5	Procurement from Commission/Bidrow			80%	
8.3.1.6	General P/L			75%	
8.3.1.7	Structure Contract (Civil A, 28 days)			70%	
8.3.1.8	Material/Steel (Contracted) (Civil A)			70%	
8.3.1.9	Formwork and Scaffolding			65%	
8.3.1.10	Formwork			60%	
8.3.1.11	100mm CM8 non-load bearing (including Reinforcing Steel)			50%	
8.3.1.12	150mm CM8 non-load bearing (including Reinforcing Steel)			50%	
8.3.1.13	Forming Work (Steel)			45%	
8.3.1.14	Forming Work (Aluminum)			45%	
8.3.1.15	Forming Work (Formwork)			35%	
8.3.1.16	Forming Work (Formwork)			35%	
8.3.1.17	Forming Work (Formwork)			35%	
8.3.1.18	Forming Work (Formwork)			35%	
8.3.1.19	Forming Work (Formwork)			35%	
8.3.1.20	Forming Work (Formwork)			35%	
8.3.1.21	Forming Work (Formwork)			35%	
8.3.1.22	Forming Work (Formwork)			35%	
8.3.1.23	Forming Work (Formwork)			35%	
8.3.1.24	Forming Work (Formwork)			35%	
8.3.1.25	Forming Work (Formwork)			35%	
8.3.1.26	Forming Work (Formwork)			35%	
8.3.1.27	Forming Work (Formwork)			35%	
8.3.1.28	Forming Work (Formwork)			35%	
8.3.1.29	Forming Work (Formwork)			35%	
8.3.1.30	Forming Work (Formwork)			35%	
8.3.1.31	Forming Work (Formwork)			35%	
8.3.1.32	Forming Work (Formwork)			35%	
8.3.1.33	Forming Work (Formwork)			35%	
8.3.1.34	Forming Work (Formwork)			35%	
8.3.1.35	Forming Work (Formwork)			35%	
8.3.1.36	Forming Work (Formwork)			35%	
8.3.1.37	Forming Work (Formwork)			35%	
8.3.1.38	Forming Work (Formwork)			35%	
8.3.1.39	Forming Work (Formwork)			35%	
8.3.1.40	Forming Work (Formwork)			35%	
8.3.1.41	Forming Work (Formwork)			35%	
8.3.1.42	Forming Work (Formwork)			35%	
8.3.1.43	Forming Work (Formwork)			35%	
8.3.1.44	Forming Work (Formwork)			35%	
8.3.1.45	Forming Work (Formwork)			35%	
8.3.1.46	Forming Work (Formwork)			35%	
8.3.1.47	Forming Work (Formwork)			35%	
8.3.1.48	Forming Work (Formwork)			35%	
8.3.1.49	Forming Work (Formwork)			35%	
8.3.1.50	Forming Work (Formwork)			35%	
8.3.1.51	Forming Work (Formwork)			35%	
8.3.1.52	Forming Work (Formwork)			35%	
8.3.1.53	Forming Work (Formwork)			35%	
8.3.1.54	Forming Work (Formwork)			35%	
8.3.1.55	Forming Work (Formwork)			35%	
8.3.1.56	Forming Work (Formwork)			35%	
8.3.1.57	Forming Work (Formwork)			35%	
8.3.1.58	Forming Work (Formwork)			35%	
8.3.1.59	Forming Work (Formwork)			35%	
8.3.1.60	Forming Work (Formwork)			35%	
8.3.1.61	Forming Work (Formwork)			35%	
8.3.1.62	Forming Work (Formwork)			35%	
8.3.1.63	Forming Work (Formwork)			35%	
8.3.1.64	Forming Work (Formwork)			35%	
8.3.1.65	Forming Work (Formwork)			35%	
8.3.1.66	Forming Work (Formwork)			35%	
8.3.1.67	Forming Work (Formwork)			35%	
8.3.1.68	Forming Work (Formwork)			35%	
8.3.1.69	Forming Work (Formwork)			35%	
8.3.1.70	Forming Work (Formwork)			35%	
8.3.1.71	Forming Work (Formwork)			35%	
8.3.1.72	Forming Work (Formwork)			35%	
8.3.1.73	Forming Work (Formwork)			35%	
8.3.1.74	Forming Work (Formwork)			35%	
8.3.1.75	Forming Work (Formwork)			35%	
8.3.1.76	Forming Work (Formwork)			35%	
8.3.1.77	Forming Work (Formwork)			35%	
8.3.1.78	Forming Work (Formwork)			35%	
8.3.1.79	Forming Work (Formwork)			35%	
8.3.1.80	Forming Work (Formwork)			35%	
8.3.1.81	Forming Work (Formwork)			35%	
8.3.1.82	Forming Work (Formwork)			35%	
8.3.1.83	Forming Work (Formwork)			35%	
8.3.1.84	Forming Work (Formwork)			35%	
8.3.1.85	Forming Work (Formwork)			35%	
8.3.1.86	Forming Work (Formwork)			35%	
8.3.1.87	Forming Work (Formwork)			35%	
8.3.1.88	Forming Work (Formwork)			35%	
8.3.1.89	Forming Work (Formwork)			35%	
8.3.1.90	Forming Work (Formwork)			35%	
8.3.1.91	Forming Work (Formwork)			35%	
8.3.1.92	Forming Work (Formwork)			35%	
8.3.1.93	Forming Work (Formwork)			35%	
8.3.1.94	Forming Work (Formwork)			35%	
8.3.1.95	Forming Work (Formwork)			35%	
8.3.1.96	Forming Work (Formwork)			35%	
8.3.1.97	Forming Work (Formwork)			35%	
8.3.1.98	Forming Work (Formwork)			35%	
8.3.1.99	Forming Work (Formwork)			35%	
8.3.1.100	Forming Work (Formwork)			35%	

Prepared by:
 GERALD J. BACAL
 Engineer

Checked by:
 HAROLD G. NARITA
 City Engineer

CONSTRUCTION METHOD

Introduction

The project covers the "CONSTRUCTION OF BUILDING/PROCESSING CENTER FOR QUILING NORTE PEANUT PROCESSORS ASSOCIATION" at Quiling Norte, City of Batac, Ilocos Norte. All works shall be done in accordance with the approved plans, and specifications and shall conform to the local ordinances.

The contractor shall furnished all materials, labor, tools and equipment needed in the implementation of the above mentioned project and shall be completed One Hundred Twenty Two (122) calendar days from receipt of the notice to proceed.

Brief Description of the Contract Works:

Scope of Works:

PART II. OTHER GENERAL REQUIREMENTS- This Covers the item Permit Clearances, Project Billboard/Signage, Occupational Safety and Health Program, and Mobilization

PART III. CIVIL, MECHANICAL, ELECTRICAL AND SANITARY/PLUMBING WORKS

PART A. EARTHWORKS - This cover the item of Structure Excavation, Embankment from structure Excavation, and Gravel fill of the project as specified in the plans.

PART B. PLAIN AND REINFORCED CONCRETE WORKS- This cover the item of Structural Concrete, Reinforcing Steel, and Formworks and False works of the project as specified in the plans.

PART C. FINISHING - This cover the Item Soil Poisoning, 100mm CHB Non Load Bearing, 150mm CHB Non Load Bearing, Painting Work(Steel),Fascia Board, Fabricated Metal Roofing Accessory(Flashing), Fabricated Metal Roofing Accessory(Gutter), Pre-painted Metal Sheet, Structural Steel, "Boxes, Conduits and Fittings", Sewer Line, And Cold Water Lines of the project as specified in the plans.

CONSTRUCTION METHOD AND PROCEDURE

Methodology of General Approach:

Upon receipt of the Notice to Proceed (NTP) from the implementing Agency, equipment, tools,

The contractor immediately precedes the construction of the temporary facilities for his manpower,

The activities should simultaneously follow the scheme on the construction schedule submitted.

Any works encountered but not included in the program of works will be reported immediately to the

Cleaning the vicinity of the project and dispose all construction debris and waste should be made

PROGRAM OF WORK: (Please refer to the Detailed Estimate)

FINANCIAL PROGRAM: (Please refer to the Cash Flow by Quarter and Payment Schedule)

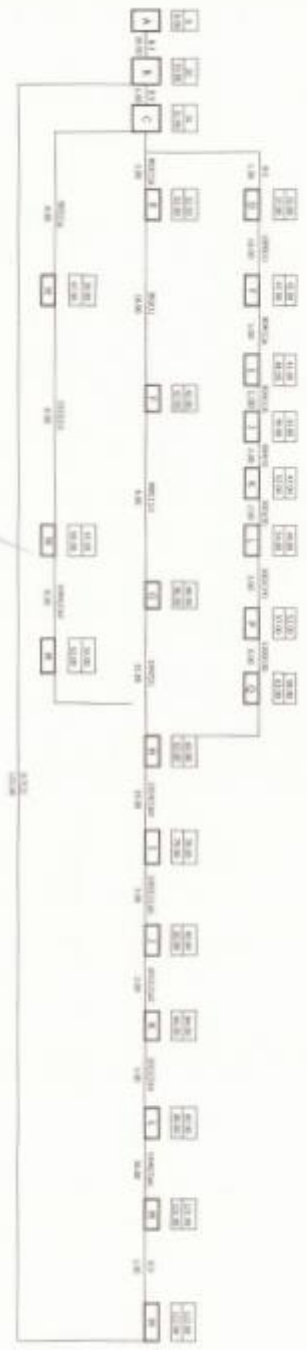
Submitted by:


GERALD JOHN C. SAGADRACA
Engineer I



Republic of the Philippines
DEPARTMENT OF HEALTH
OFFICE OF THE ASSISTANT SECRETARY FOR
MUNICIPALITY, CITY AND PROVINCE
OFFICE OF THE ASSISTANT SECRETARY FOR
MUNICIPALITY, CITY AND PROVINCE


REPORT CARD
MUNICIPALITY OF BANGALIPAN, CANTONMENT OF BANGALIPAN, PROVINCE OF BANGALIPAN
OFFICE OF THE ASSISTANT SECRETARY FOR MUNICIPALITY, CITY AND PROVINCE




Approved: _____
MUNICIPALITY OF BANGALIPAN


Approved: _____
MUNICIPALITY OF BANGALIPAN

Section VII. Drawings




1 EXTERIOR PERSPECTIVE





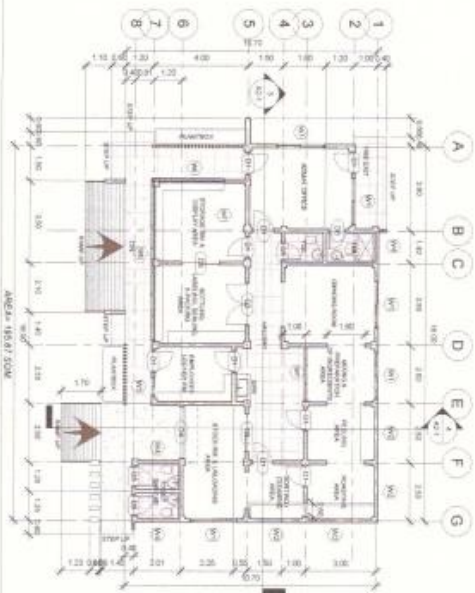
2 SITE DEVELOPMENT PLAN



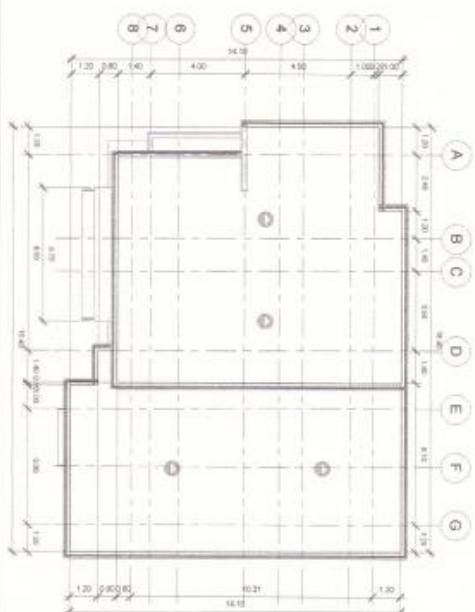
3 VICINITY MAP

TABLE OF CONTENTS		
A.1	EXTERIOR PERSPECTIVE	REPUBLIC OF THE PHILIPPINES DEPARTMENT OF PUBLIC WORKS AND HIGHWAYS OFFICE OF THE CITY ENGINEER CITY OF BATANG
A.2	EXTERIOR PERSPECTIVE	BUILDING OFFICIAL
A.3	LAND USE AND ZONING	LINE AND GRADE
A.4	STRUCTURAL PLAN	MECHANICAL
A.5	ELECTRICAL PLAN	SANITARY
A.6	MECHANICAL PLAN	ELECTRICAL
A.7	SANITARY PLAN	MECHANICAL
A.8	LAND USE AND ZONING	BUREAU OF FIRE

<p>ENGR. ALBERT D. CHUA CITY ENGINEER</p>	<p>DR. RICHARD B. BARRAL CITY ENGINEER</p>	<p>DR. JOYCE A. CRISTAL CITY ENGINEER</p>
------------------------------------------------------	-------------------------------------------------------	------------------------------------------------------



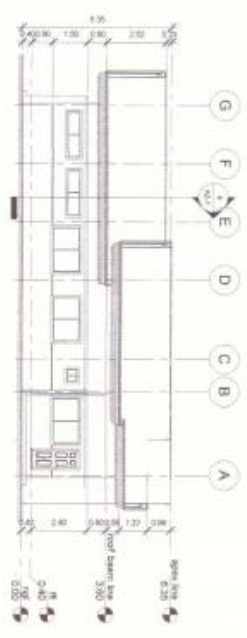
1 FLOOR PLAN



2 ROOF PLAN

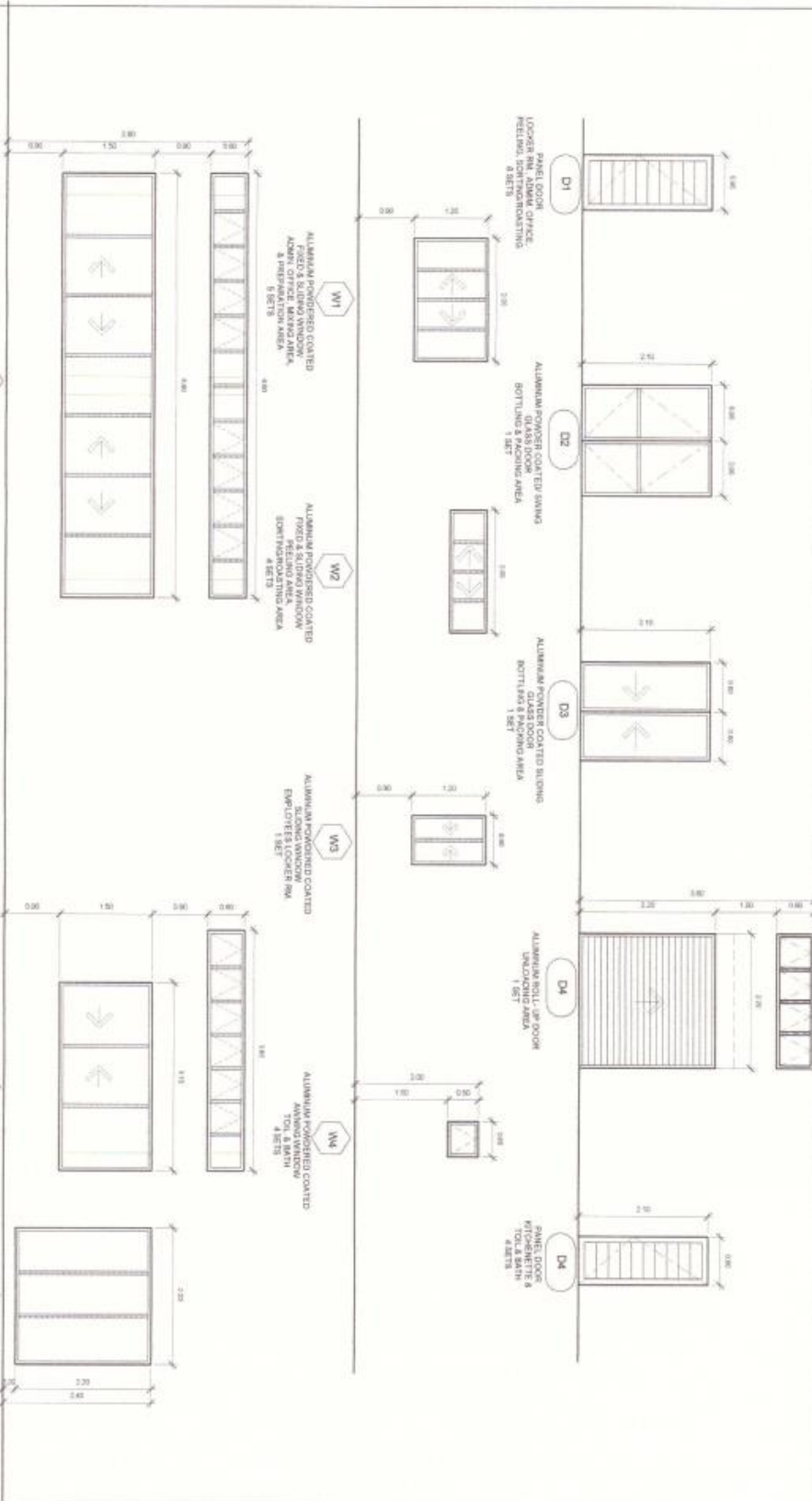


3 FRONT ELEVATION



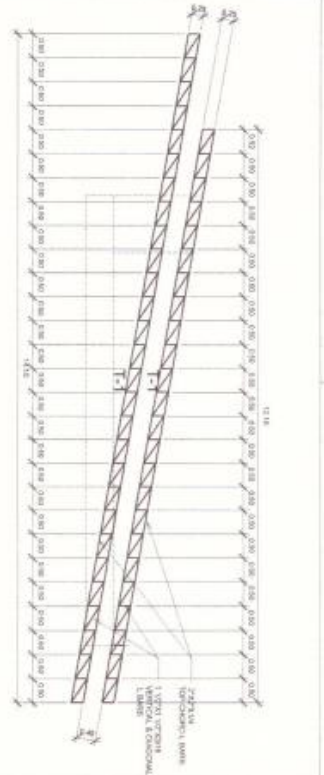
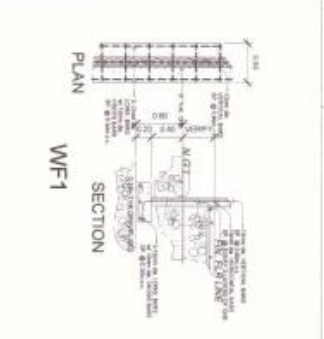
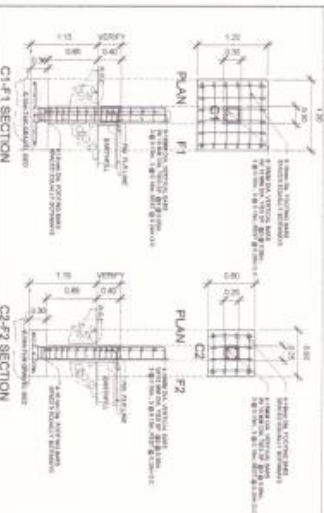
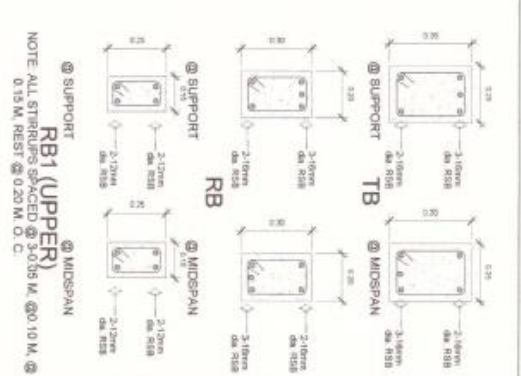
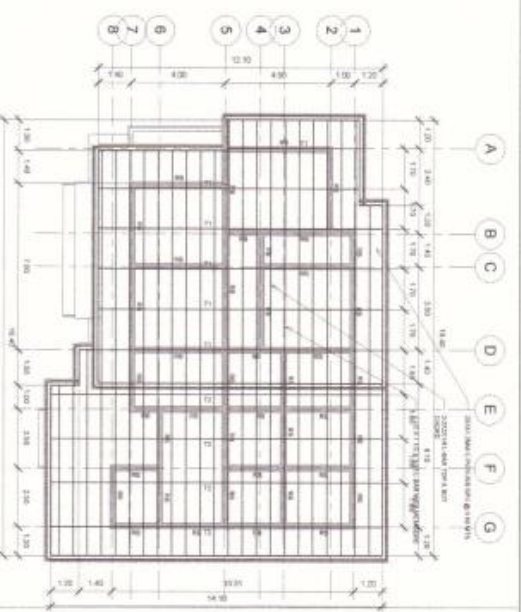
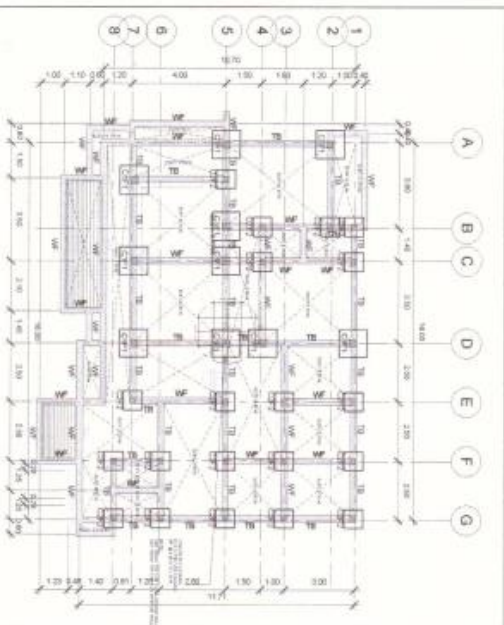
4 REAR ELEVATION

	STATE OF CALIFORNIA PROFESSIONAL ENGINEER CITY ENGINEERING OFFICE 1000 J STREET, SUITE 100 SACRAMENTO, CALIFORNIA 95811	PROJECT TITLE: PROPOSED MARKET CENTRE FOR QUALITY MARKET FARMERS ASSOCIATION	PROJECT LOCATION: 1000 J STREET, SUITE 100 SACRAMENTO, CALIFORNIA 95811	DRAWING NO.: AS SHOWN	SHEET NO.: 1	DATE: 10/20/2023	PROJECT NO.: 1000 J STREET, SUITE 100	SCALE: AS SHOWN	DRAWN BY: JAMES P. BENTON	CHECKED BY: JAMES P. BENTON	APPROVED BY: JAMES P. BENTON	PROJECT NO.: 1000 J STREET, SUITE 100	SHEET NO.: A
	PROJECT NO.: 1000 J STREET, SUITE 100	SHEET NO.: 1	DATE: 10/20/2023	DRAWN BY: JAMES P. BENTON	CHECKED BY: JAMES P. BENTON	APPROVED BY: JAMES P. BENTON	PROJECT NO.: 1000 J STREET, SUITE 100	SHEET NO.: A					

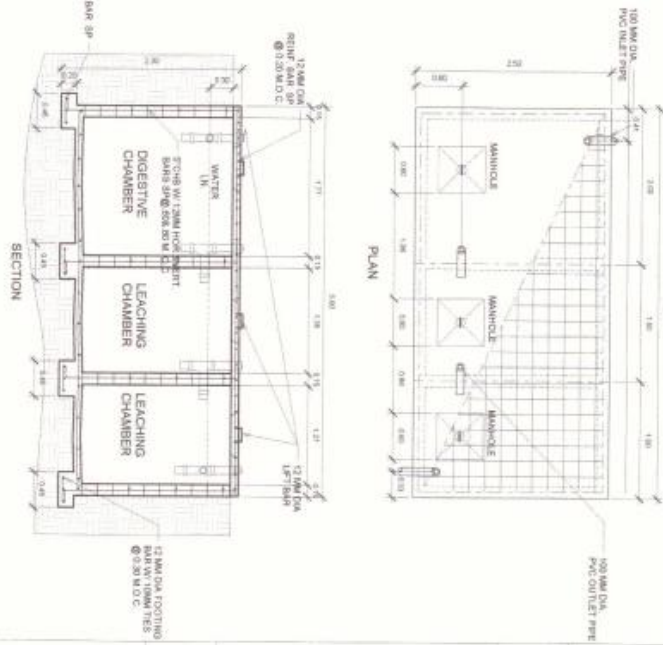


4 SCHEDULE OF DOORS AND WINDOWS

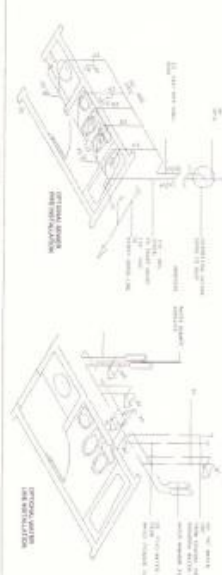
	MUNICIPAL ENGINEER CITY ENGINEERING OFFICE	PROJECT TITLE PROPOSED PROCESSING CENTER FOR QUALITY NORITE FERTILIZERS ASSOCIATION	APPROVED BY PROJECT/DESIGNER (Signature)	DATE ()	SHEET NO. ()	TOTAL SHEETS ()	DRAWN BY ()	CHECKED BY ()	DATE ()	SCALE ()	PROJECT NO. ()	SHEET NO. ()	TOTAL SHEETS ()	DRAWN BY ()	CHECKED BY ()	DATE ()	SCALE ()	PROJECT NO. ()	SHEET NO. ()	TOTAL SHEETS ()
	PROJECT/DESIGNER (Signature)	APPROVED BY PROJECT/DESIGNER (Signature)	DATE ()	SHEET NO. ()	TOTAL SHEETS ()	DRAWN BY ()	CHECKED BY ()	DATE ()	SCALE ()	PROJECT NO. ()	SHEET NO. ()	TOTAL SHEETS ()	DRAWN BY ()	CHECKED BY ()	DATE ()	SCALE ()	PROJECT NO. ()	SHEET NO. ()	TOTAL SHEETS ()	



	PROJECT TITLE CITY ENGINEERING OFFICE	PROJECT TITLE PROGRESSIVE CENTER FOR QUALITY MGMT. FOR THE NORTH PENANG PROCESSORS ASSOCIATION	PROJECT TITLE AS SHOWN	PROJECT TITLE ZHEH HUI MEDICAL CENTER	PROJECT TITLE JOE'S HOTEL	PROJECT TITLE INDONESIA MANSION	PROJECT TITLE ENGR. ALBERT D. CHUA	SHEET NO. S-1
	CITY ENGINEERING OFFICE 118, MARKET STREET, PENANG (04) 261 1111	PROGRESSIVE CENTER FOR QUALITY MGMT. FOR THE NORTH PENANG PROCESSORS ASSOCIATION 118, MARKET STREET, PENANG (04) 261 1111	AS SHOWN 118, MARKET STREET, PENANG (04) 261 1111	ZHEH HUI MEDICAL CENTER 118, MARKET STREET, PENANG (04) 261 1111	JOE'S HOTEL 118, MARKET STREET, PENANG (04) 261 1111	INDONESIA MANSION 118, MARKET STREET, PENANG (04) 261 1111	ENGR. ALBERT D. CHUA CIVIL ENGINEER	SHEET NO. S-1



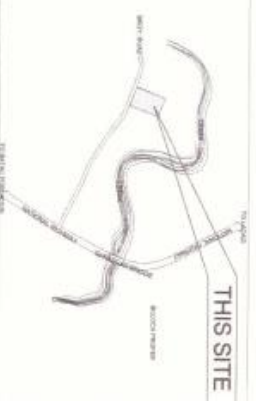
5 PLAN AND DETAILED SECTION OF SEPTIC TANK



6 TYPICAL ISOMETRIC FIXTURE DETAILS

WC WATER CLOSET	VTR VENT THROUGH ROOF
FD FLOOR DRAIN	SC SEPTIC WELLS
LAV LAVATORY	LC LEACHING CHAMBER
SH SHOWER HEAD	DC DIGESTIVE CHAMBER
KSK KITCHEN SINK	MH MAN HOLE
CO CLEAN OUT	M METER
SP SOIL PIPE	HB HOSE BIBB
CS CATCH BASIN	DRINKWATER LN
FC FACET	SEWER LN
SHD SHOWER	CLEAN WATER LN
M WATER MESH	GATE VALVE
	GV
	CV

7 PLUMBING SYMBOLS



8 LOCATION MAP

1. THE PLUMBING SYMBOLS SHALL BE DONE IN ACCORDANCE WITH THE PROVISIONS OF THE LATEST EDITION OF THE COMPASS IN VARIOUS CODES AND
2. BEFORE CONSTRUCTION ANY WORK, CONTRACTOR SHALL, THROUGHOUT, EXAMINE ALL RELEVANT REGULATIONS AND BY-LAWS OF THE LOCAL AUTHORITY AND ALL APPLICABLE LAWS AND REGULATIONS WHICH MAY BE IN FORCE AT THE TIME OF CONSTRUCTION AND SHALL BE RESPONSIBLE FOR OBTAINING ALL NECESSARY PERMITS AND APPROVALS FROM THE LOCAL AUTHORITY AND ALL APPLICABLE LAWS AND REGULATIONS.
3. ALL WORK SHALL BE IN ACCORDANCE WITH THE PROVISIONS OF THE COMPASS IN VARIOUS CODES AND
4. ALL WORK SHALL BE IN ACCORDANCE WITH THE PROVISIONS OF THE COMPASS IN VARIOUS CODES AND
5. ALL WORK SHALL BE IN ACCORDANCE WITH THE PROVISIONS OF THE COMPASS IN VARIOUS CODES AND
6. ALL WORK SHALL BE IN ACCORDANCE WITH THE PROVISIONS OF THE COMPASS IN VARIOUS CODES AND
7. ALL WORK SHALL BE IN ACCORDANCE WITH THE PROVISIONS OF THE COMPASS IN VARIOUS CODES AND
8. ALL WORK SHALL BE IN ACCORDANCE WITH THE PROVISIONS OF THE COMPASS IN VARIOUS CODES AND
9. ALL WORK SHALL BE IN ACCORDANCE WITH THE PROVISIONS OF THE COMPASS IN VARIOUS CODES AND
10. ALL WORK SHALL BE IN ACCORDANCE WITH THE PROVISIONS OF THE COMPASS IN VARIOUS CODES AND
11. ALL WORK SHALL BE IN ACCORDANCE WITH THE PROVISIONS OF THE COMPASS IN VARIOUS CODES AND
12. ALL WORK SHALL BE IN ACCORDANCE WITH THE PROVISIONS OF THE COMPASS IN VARIOUS CODES AND
13. ALL WORK SHALL BE IN ACCORDANCE WITH THE PROVISIONS OF THE COMPASS IN VARIOUS CODES AND
14. ALL WORK SHALL BE IN ACCORDANCE WITH THE PROVISIONS OF THE COMPASS IN VARIOUS CODES AND
15. ALL WORK SHALL BE IN ACCORDANCE WITH THE PROVISIONS OF THE COMPASS IN VARIOUS CODES AND

9 PLUMBING NOTES

PROVIDER:
PROGRESSOR CHAIRS FOR QUALITY MONITE PLUMBING ASSOCIATION

PROJECT LOCATION: 100, ALBERT STREET, SINGAPORE

DATE: 15/11/2023

SCALE: AS SHOWN

DESIGNER: ENGR. ALBERT D. CHUA

CHECKER: ENGR. ALBERT D. CHUA

DATE: 15/11/2023

CLIENT: CITY ENGINEERING OFFICE

PROJECT NO.: 100, ALBERT STREET, SINGAPORE

DATE: 15/11/2023

SCALE: AS SHOWN

DESIGNER: ENGR. ALBERT D. CHUA

CHECKER: ENGR. ALBERT D. CHUA

DATE: 15/11/2023

Section VIII. Bill of Quantities

ITEM	DESCRIPTION	UNIT	QUANTITY	UNIT PRICE (Pesos)	AMOUNT PESOS
B.3	Permits and Clearances	L.s.	1.0	In words: <u>Pesos</u> <hr/> In Figures: <u>Php</u>	In Figures: <u>Php</u>
B.5	Project Billboard/ Signboard	Ea.	1.0	In words: <u>Pesos</u> <hr/> In Figures: <u>Php</u>	In Figures: <u>Php</u>
B.7(2)	Occupational Safety and Health	L.S.	1.0	In words: <u>Pesos</u> <hr/> In Figures: <u>Php</u>	In Figures: <u>Php.</u>
B.9	Mobilization / Demobilization	L.S.	1.0	In words: <u>Pesos</u> <hr/> In Figures: <u>Php</u>	In Figures: <u>Php.</u>
803(1)a	Structure Excavation (Common Soil, Manual Excavation)	cu.m.	62.72	In words: <u>Pesos</u> <hr/> In Figures: <u>Php</u>	In Figures: <u>Php.</u>
804(1)a	Embankment from Structure Excavation	cu.m.	62.72	In words: <u>Pesos</u> <hr/> In Figures: <u>Php</u>	In Figures: <u>Php.</u>
804(1)b	Embankment from Common Borrow	cu.m.	62.23	In words: <u>Pesos</u> <hr/> In Figures: <u>Php</u>	In Figures: <u>Php.</u>

804(4)	Gravel fill	cu.m.	28.18	In words: <u>Pesos</u> In Figures: <u>Php</u>	In Figures: <u>Php.</u>
900(1)c1	Structural Concrete (Class A), 28 days	cu.m.	149.79	In words: <u>Pesos</u> In Figures: <u>Php</u>	In Figures: <u>Php.</u>
902(1)a	Reinforcing Steel (Deformed), Grade 40	kgs.	7,283.54	In words: <u>Pesos</u> In Figures: <u>Php</u>	In Figures: <u>Php.</u>
903(1)	Formworks and Falseworks	sq.m.	334.71	In words: <u>Pesos</u> In Figures: <u>Php</u>	In Figures: <u>Php.</u>
1000(1)	Soil Poisoning	lit.	325.28	In words: <u>Pesos</u> In Figures: <u>Php</u>	In Figures: <u>Php.</u>
1046(2)a 1	100mm CHB Non-Load Bearing (including Reinforcing steel bar)	sq.m.	218.28	In words: <u>Pesos</u> In Figures: <u>Php</u>	In Figures: <u>Php.</u>
1046(2)a 2	150mm CHB Non-Load Bearing (including Reinforcing steel bar)	sq.m.	193.01	In words: <u>Pesos</u> In Figures: <u>Php</u>	In Figures: <u>Php.</u>
1032(1)c	Painting Works (Steel)	sq.m.	183.35	In words: <u>Pesos</u>	In Figures: <u>Php.</u>

				In Figures: <u>Php</u>	
1003(11) a1	Facia Board (19 mm, Fiber Cement Board)	l.m.	76.60	In words: <u>Pesos</u> In Figures: <u>Php</u>	In Figures: <u>Php.</u>
1013(2)a 2	Fabricated Metal Accessory (Flashing GA26)	l.m.	90.32	In words: <u>Pesos</u> In Figures: <u>Php</u>	In Figures: <u>Php.</u>
1013(2)a 1	Fabricated Metal Accessory (Gutters GA26)	l.m.	19.80	In words: <u>Pesos</u> In Figures: <u>Php</u>	In Figures: <u>Php.</u>
1014(1)b 2	Prepainted Metal Sheets, (Loong Span,Rib Type, Above 0.427mm thk)	sq.m.	258.49	In words: <u>Pesos</u> In Figures: <u>Php</u>	In Figures: <u>Php.</u>
1047(2)	Structural Steel	kgs.	2,693.98	In words: <u>Pesos</u> In Figures: <u>Php</u>	In Figures: <u>Php.</u>
1100(10)	Conduit, Boxes & Fittings (Conduit Works/Conduit Rough-In)	l.s.	1.0	In words: <u>Pesos</u> In Figures: <u>Php</u>	In Figures: <u>Php.</u>
1001(8)	Sewer Line Works	l.s.	1.0	In words: <u>Pesos</u> In Figures: <u>Php</u>	In Figures: <u>Php.</u>
1002(24)	Cold Water Lines	l.s.	1.0	In words: <u>Pesos</u>	In Figures: <u>Php.</u>

				<hr/> In Figures: <u>Php</u> <hr/>	
--	--	--	--	------------------------------------	--

Section IX. Checklist of Technical and Financial Documents

Notes on the Checklist of Technical and Financial Documents

The prescribed documents in the checklist are mandatory to be submitted in the Bid, but shall be subject to the following:

- a. GPPB Resolution No. 09-2020 on the efficient procurement measures during a State of Calamity or other similar issuances that shall allow the use of alternate documents in lieu of the mandated requirements; or
- b. any subsequent GPPB issuances adjusting the documentary requirements after the effectivity of the adoption of the PBDs.

The BAC shall be checking the submitted documents of each Bidder against this checklist to ascertain if they are all present, using a non-discretionary “pass/fail” criterion pursuant to Section 30 of the 2016 revised IRR of RA No. 9184.

Checklist of Technical and Financial Documents

I. TECHNICAL COMPONENT ENVELOPE

Class “A” Documents

Legal Documents

- (a) Valid PhilGEPS Registration Certificate (Platinum Membership) (all pages);
or

Technical Documents

- (e) Statement of the prospective bidder of all its ongoing government and private contracts, including contracts awarded but not yet started, if any, whether similar or not similar in nature and complexity to the contract to be bid; **and**
- (f) Statement of the bidder’s Single Largest Completed Contract (SLCC) similar to the contract to be bid, except under conditions provided under the rules; **and**
- (g) Philippine Contractors Accreditation Board (PCAB) License;
or
Special PCAB License in case of Joint Ventures; **and** registration for the type and cost of the contract to be bid; **and**
- (h) Original copy of Bid Security. If in the form of a Surety Bond, submit also a certification issued by the Insurance Commission;
or
Original copy of Notarized Bid Securing Declaration; **and**
- (i) Project Requirements, which shall include the following:
- a. Organizational chart for the contract to be bid;
- b. List of contractor’s key personnel (*e.g.*, Project Manager, Project Engineers, Materials Engineers, and Foremen), to be assigned to the contract to be bid, with their complete qualification and experience data;
- c. List of contractor’s major equipment units, which are owned, leased, and/or under purchase agreements, supported by proof of ownership or certification of availability of equipment from the equipment lessor/vendor for the duration of the project, as the case may be; **and**
- (j) Original duly signed Omnibus Sworn Statement (OSS); **and** if applicable, Original Notarized Secretary’s Certificate in case of a corporation, partnership, or cooperative; or Original Special Power of Attorney of all members of the joint venture giving full power and authority to its officer to sign the OSS and do acts to represent the Bidder.

Financial Documents

- (k) The prospective bidder’s audited financial statements, showing, among others, the prospective bidder’s total and current assets and liabilities, stamped “received” by the BIR or its duly accredited and authorized institutions, for the preceding calendar year which should not be earlier than two (2) years from the date of bid submission; **and**
- (l) The prospective bidder’s computation of Net Financial Contracting Capacity (NFCC).

Class “B” Documents

- (m) If applicable, duly signed joint venture agreement (JVA) in accordance with RA No. 4566 and its IRR in case the joint venture is already in existence;
or

duly notarized statements from all the potential joint venture partners stating that they will enter into and abide by the provisions of the JVA in the instance that the bid is successful.

II. FINANCIAL COMPONENT ENVELOPE

- (n) Original of duly signed and accomplished Financial Bid Form; **and**

Other documentary requirements under RA No. 9184

- (o) Original of duly signed Bid Prices in the Bill of Quantities; **and**
- (p) Duly accomplished Detailed Estimates Form, including a summary sheet indicating the unit prices of construction materials, labor rates, and equipment rentals used in coming up with the Bid; **and**
- (q) Cash Flow by Quarter.

Republic of the Philippines



Government Procurement Policy Board