

**PHILIPPINE BIDDING DOCUMENTS**

**Procurement of  
INFRASTRUCTURE  
PROJECTS**

Government of the Republic of the Philippines

**CONSTRUCTION OF TWO-STOREY BUILDING  
(WITH GARAGE) OF BUREAU OF FIRE  
PROTECTION, #16-S QUILING, CITY OF  
BATAC**

**Sixth Edition  
July 2020**

# Preface

These Philippine Bidding Documents (PBDs) for the procurement of Infrastructure Projects (hereinafter referred to also as the “Works”) through Competitive Bidding have been prepared by the Government of the Philippines for use by all branches, agencies, departments, bureaus, offices, or instrumentalities of the government, including government-owned and/or -controlled corporations, government financial institutions, state universities and colleges, local government units, and autonomous regional government. The procedures and practices presented in this document have been developed through broad experience, and are for mandatory use in projects that are financed in whole or in part by the Government of the Philippines or any foreign government/foreign or international financing institution in accordance with the provisions of the 2016 revised Implementing Rules and Regulations (IRR) of Republic Act (RA) No. 9184.

The PBDs are intended as a model for admeasurements (unit prices or unit rates in a bill of quantities) types of contracts, which are the most common in Works contracting.

The Bidding Documents shall clearly and adequately define, among others: (i) the objectives, scope, and expected outputs and/or results of the proposed contract; (ii) the eligibility requirements of Bidders; (iii) the expected contract duration; and (iv) the obligations, duties, and/or functions of the winning Bidder.

Care should be taken to check the relevance of the provisions of the PBDs against the requirements of the specific Works to be procured. If duplication of a subject is inevitable in other sections of the document prepared by the Procuring Entity, care must be exercised to avoid contradictions between clauses dealing with the same matter.

Moreover, each section is prepared with notes intended only as information for the Procuring Entity or the person drafting the Bidding Documents. They shall not be included in the final documents. The following general directions should be observed when using the documents:

- a. All the documents listed in the Table of Contents are normally required for the procurement of Infrastructure Projects. However, they should be adapted as necessary to the circumstances of the particular Project.
- b. Specific details, such as the “*name of the Procuring Entity*” and “*address for bid submission*,” should be furnished in the Instructions to Bidders, Bid Data Sheet, and Special Conditions of Contract. The final documents should contain neither blank spaces nor options.
- c. This Preface and the footnotes or notes in italics included in the Invitation to Bid, BDS, General Conditions of Contract, Special Conditions of Contract, Specifications, Drawings, and Bill of Quantities are not part of the text of the final document, although they contain instructions that the Procuring Entity should strictly follow.
- d. The cover should be modified as required to identify the Bidding Documents as to the names of the Project, Contract, and Procuring Entity, in addition to date of issue.

- e. Modifications for specific Procurement Project details should be provided in the Special Conditions of Contract as amendments to the Conditions of Contract. For easy completion, whenever reference has to be made to specific clauses in the Bid Data Sheet or Special Conditions of Contract, these terms shall be printed in bold typeface on Sections I (Instructions to Bidders) and III (General Conditions of Contract), respectively.
- f. For guidelines on the use of Bidding Forms and the procurement of Foreign-Assisted Projects, these will be covered by a separate issuance of the Government Procurement Policy Board.

# TABLE OF CONTENTS

<b>Glossary of Terms, Abbreviations, and Acronyms.....</b>	<b>5</b>
<b>Section I. Invitation to Bid .....</b>	<b>8</b>
<b>Section II. Instructions to Bidders.....</b>	<b>11</b>
1. Scope of Bid.....	12
2. Funding Information .....	12
3. Bidding Requirements.....	12
4. Corrupt, Fraudulent, Collusive, Coercive, and Obstructive Practices .....	12
5. Eligible Bidders.....	12
6. Origin of Associated Goods .....	13
7. Subcontracts .....	13
8. Pre-Bid Conference.....	13
9. Clarification and Amendment of Bidding Documents.....	13
10. Documents Comprising the Bid: Eligibility and Technical Components.....	13
11. Documents Comprising the Bid: Financial Component .....	14
12. Alternative Bids .....	14
13. Bid Prices .....	14
14. Bid and Payment Currencies.....	14
15. Bid Security.....	15
16. Sealing and Marking of Bids.....	15
17. Deadline for Submission of Bids .....	15
18. Opening and Preliminary Examination of Bids .....	15
19. Detailed Evaluation and Comparison of Bids.....	15
20. Post Qualification.....	16
21. Signing of the Contract .....	16
<b>Section III. Bid Data Sheet.....</b>	<b>17</b>
<b>Section IV. General Conditions of Contract .....</b>	<b>20</b>
1. Scope of Contract.....	21
2. Sectional Completion of Works .....	21
3. Possession of Site.....	21
4. The Contractor’s Obligations.....	21
5. Performance Security .....	21
6. Site Investigation Reports .....	22

7.	Warranty.....	22
8.	Liability of the Contractor.....	22
9.	Termination for Other Causes.....	22
10.	Dayworks .....	23
11.	Program of Work.....	23
12.	Instructions, Inspections and Audits .....	23
13.	Advance Payment.....	23
14.	Progress Payments .....	23
15.	Operating and Maintenance Manuals.....	23
	<b>Section V. Special Conditions of Contract.....</b>	<b>25</b>
	<b>Section VI. Specifications .....</b>	<b>27</b>
	<b>Section VII. Drawings.....</b>	<b>34</b>
	<b>Section VIII. Bill of Quantities .....</b>	<b>48</b>
	<b>Section IX. Checklist of Technical and Financial Documents.....</b>	<b>54</b>

# *Glossary of Terms, Abbreviations, and Acronyms*

**ABC** – Approved Budget for the Contract.

**ARCC** – Allowable Range of Contract Cost.

**BAC** – Bids and Awards Committee.

**Bid** – A signed offer or proposal to undertake a contract submitted by a bidder in response to and in consonance with the requirements of the bidding documents. Also referred to as *Proposal* and *Tender*. (2016 revised IRR, Section 5[c])

**Bidder** – Refers to a contractor, manufacturer, supplier, distributor and/or consultant who submits a bid in response to the requirements of the Bidding Documents. (2016 revised IRR, Section 5[d])

**Bidding Documents** – The documents issued by the Procuring Entity as the bases for bids, furnishing all information necessary for a prospective bidder to prepare a bid for the Goods, Infrastructure Projects, and/or Consulting Services required by the Procuring Entity. (2016 revised IRR, Section 5[e])

**BIR** – Bureau of Internal Revenue.

**BSP** – Bangko Sentral ng Pilipinas.

**CDA** – Cooperative Development Authority.

**Consulting Services** – Refer to services for Infrastructure Projects and other types of projects or activities of the GOP requiring adequate external technical and professional expertise that are beyond the capability and/or capacity of the GOP to undertake such as, but not limited to: (i) advisory and review services; (ii) pre-investment or feasibility studies; (iii) design; (iv) construction supervision; (v) management and related services; and (vi) other technical services or special studies. (2016 revised IRR, Section 5[i])

**Contract** – Refers to the agreement entered into between the Procuring Entity and the Supplier or Manufacturer or Distributor or Service Provider for procurement of Goods and Services; Contractor for Procurement of Infrastructure Projects; or Consultant or Consulting Firm for Procurement of Consulting Services; as the case may be, as recorded in the Contract Form signed by the parties, including all attachments and appendices thereto and all documents incorporated by reference therein.

**Contractor** – is a natural or juridical entity whose proposal was accepted by the Procuring Entity and to whom the Contract to execute the Work was awarded. Contractor as used in these Bidding Documents may likewise refer to a supplier, distributor, manufacturer, or consultant.

**CPI** – Consumer Price Index.

**DOLE** – Department of Labor and Employment.

**DTI** – Department of Trade and Industry.

**Foreign-funded Procurement or Foreign-Assisted Project** – Refers to procurement whose funding source is from a foreign government, foreign or international financing institution as specified in the Treaty or International or Executive Agreement. (2016 revised IRR, Section 5[b]).

**GFI** – Government Financial Institution.

**GOCC** – Government-owned and/or –controlled corporation.

**Goods** – Refer to all items, supplies, materials and general support services, except Consulting Services and Infrastructure Projects, which may be needed in the transaction of public businesses or in the pursuit of any government undertaking, project or activity, whether in the nature of equipment, furniture, stationery, materials for construction, or personal property of any kind, including non-personal or contractual services such as the repair and maintenance of equipment and furniture, as well as trucking, hauling, janitorial, security, and related or analogous services, as well as procurement of materials and supplies provided by the Procuring Entity for such services. The term “related” or “analogous services” shall include, but is not limited to, lease or purchase of office space, media advertisements, health maintenance services, and other services essential to the operation of the Procuring Entity. (2016 revised IRR, Section 5[r])

**GOP** – Government of the Philippines.

**Infrastructure Projects** – Include the construction, improvement, rehabilitation, demolition, repair, restoration or maintenance of roads and bridges, railways, airports, seaports, communication facilities, civil works components of information technology projects, irrigation, flood control and drainage, water supply, sanitation, sewerage and solid waste management systems, shore protection, energy/power and electrification facilities, national buildings, school buildings, hospital buildings, and other related construction projects of the government. Also referred to as *civil works or works*. (2016 revised IRR, Section 5[u])

**LGUs** – Local Government Units.

**NFCC** – Net Financial Contracting Capacity.

**NGA** – National Government Agency.

**PCAB** – Philippine Contractors Accreditation Board.

**PhilGEPS** - Philippine Government Electronic Procurement System.

**Procurement Project** – refers to a specific or identified procurement covering goods, infrastructure project or consulting services. A Procurement Project shall be described, detailed, and scheduled in the Project Procurement Management Plan prepared by the agency which shall be consolidated in the procuring entity's Annual Procurement Plan. (GPPB Circular No. 06-2019 dated 17 July 2019)

**PSA** – Philippine Statistics Authority.

**SEC** – Securities and Exchange Commission.

**SLCC** – Single Largest Completed Contract.

**UN** – United Nations.



## ***Section I. Invitation to Bid***

### **Notes on the Invitation to Bid**

The Invitation to Bid (IB) provides information that enables potential Bidders to decide whether to participate in the procurement at hand. The IB shall be posted in accordance with Section 21.2 of the 2016 revised IRR of RA No. 9184.

Apart from the essential items listed in the Bidding Documents, the IB should also indicate the following:

- a. The date of availability of the Bidding Documents, which shall be from the time the IB is first advertised/posted until the deadline for the submission and receipt of bids;
- b. The place where the Bidding Documents may be acquired or the website where it may be downloaded;
- c. The deadline for the submission and receipt of bids; and
- d. Any important bid evaluation criteria.

The IB should be incorporated into the Bidding Documents. The information contained in the IB must conform to the Bidding Documents and in particular to the relevant information in the Bid Data Sheet.



*Republic of the Philippines*  
*Province of Ilocos Norte*  
**CITY GOVERNMENT OF BATAC**

**Invitation to Bid for *Construction of Two-Storey Building (with Garage) of Bureau of Fire Protection, #16-S Quiling, City of Batac, Ilocos Norte***

1. The *City Government of Batac*, through the *Supplemental Budget No. 01 Series of 2023* intends to apply the sum of **Four Million Nine Hundred Ninety-Five Two Hundred Seventy-Eight Pesos and Twenty-Four Centavos (4,995,278.24)** being the Approved Budget for the Contract (ABC) to payments under the contract for *Construction of Two-Storey Building (with Garage) of Bureau of Fire Protection, #16-S Quiling, City of Batac, Ilocos Norte with Project Identification Number: CGB-2024 –PB-02-015*. Bids received in excess of the ABC shall be automatically rejected at bid opening.
2. The *City Government of Batac* now invites bids for the above Procurement Project. Completion of the Works is required **One Hundred Seventy-Three (173) calendar days**. Bidders should have completed a contract similar to the Project. The description of an eligible bidder is contained in the Bidding Documents, particularly, in Section II (Instructions to Bidders).
3. Bidding will be conducted through open competitive bidding procedures using non-discretionary “*pass/fail*” criterion as specified in the 2016 revised Implementing Rules and Regulations (IRR) of Republic Act (RA) No. 9184.
4. Interested bidders may obtain further information from *City Government of Batac* and inspect the Bidding Documents at the address given below from **8:00am to 5:00pm**.
5. A complete set of Bidding Documents may be acquired by interested bidders on **February 26, 2024 (8:00AM to 5:00 PM) to March 18, 2024 (8:00 AM to 12:00 NN)** from given address and website/s below *and upon payment of the applicable fee for the Bidding Documents, pursuant to the latest Guidelines issued by the GPPB, in the amount of Php 5,000.00*. The Procuring Entity shall allow the bidder to present its proof of payment for the fees in person, by facsimile, or through electronic means.
6. The *City Government of Batac* will hold a Pre-Bid Conference<sup>1</sup> on **March 06, 2024 at 3:30** in the afternoon at the BAC Office, 3<sup>rd</sup> Floor City Hall Building, which shall be open to prospective bidders.
7. Bids must be duly received by the BAC Secretariat through manual submission at the office address as indicated below on or before **March 18, 2024 at 12:00 NN**. Late bids shall not be accepted.
8. All bids must be accompanied by a bid security in any of the acceptable forms and in the amount stated in **ITB Clause 16**.

---

<sup>1</sup> May be deleted in case the ABC is less than One Million Pesos (PhP1,000,000) where the Procuring Entity may not hold a pre-bid conference.

9. Bid opening shall be on **March 18, 2024** at BAC Office 3<sup>rd</sup> Floor City Hall Building. Bids will be opened in the presence of the or its authorized representatives (with his/her authorization) who choose to attend the activity.
10. The *City Government of Batac* reserves the right to reject any and all bids, declare a failure of bidding, or not award the contract at any time prior to contract award in accordance with Sections 35.6 and 41 of the 2016 revised Implementing Rules and Regulations (IRR) of RA No. 9184, without thereby incurring any liability to the affected bidder or bidders.
11. For further information, please refer to:

***ENGR. MICHELLE G. MANUEL***  
*BAC Secretariat Head - Infrastructure*  
*BAC Office 3<sup>rd</sup> Floor, City Hall Building*  
*City Government of Batac*  
*Washington Street, Brgy. #1-S Valdez*  
*City of Batac, Ilocos Norte 2906*  
*Email: [bacbatacity@gmail.com](mailto:bacbatacity@gmail.com)*  
*Tel.No.: (077) 670-6433*

12. You may visit the following websites:

For downloading of Bidding Documents: *you may visit [www.batac.gov.ph](http://www.batac.gov.ph)*

**MR. MARLON F. SORIA**  
*BAC Chairman*

## ***Section II. Instructions to Bidders***

### **Notes on the Instructions to Bidders**

This Section on the Instruction to Bidders (ITB) provides the information necessary for bidders to prepare responsive bids, in accordance with the requirements of the Procuring Entity. It also provides information on bid submission, eligibility check, opening and evaluation of bids, post-qualification, and on the award of contract.

## 1. Scope of Bid

The Procuring Entity, *City Government of Batac* invites Bids for the **Construction of Two-Storey Building (with Garage) of Bureau of Fire Protection, #16-S Quiling, City of Batac, Ilocos Norte**, with **Identification Number: CGB-2024-PB-02-015**. The Procurement Project (“**Construction of 2-Storey Building**”) is for the construction of Works, as described in Section VI (Specifications).

## 2. Funding Information

2.1. The GOP through the source of funding as indicated below in the amount of **Php 4,995,278.24**.

2.2. The source of funding is:

*Supplemental Budget No. 01 Series of 2023 Assistance to Fire Department Capital Outlay.*

## 3. Bidding Requirements

The Bidding for the Project shall be governed by all the provisions of RA No. 9184 and its 2016 revised IRR, including its Generic Procurement Manual and associated policies, rules and regulations as the primary source thereof, while the herein clauses shall serve as the secondary source thereof.

Any amendments made to the IRR and other GPPB issuances shall be applicable only to the ongoing posting, advertisement, or invitation to bid by the BAC through the issuance of a supplemental or bid bulletin.

The Bidder, by the act of submitting its Bid, shall be deemed to have inspected the site, determined the general characteristics of the contracted Works and the conditions for this Project, such as the location and the nature of the work; (b) climatic conditions; (c) transportation facilities; (c) nature and condition of the terrain, geological conditions at the site communication facilities, requirements, location and availability of construction aggregates and other materials, labor, water, electric power and access roads; and (d) other factors that may affect the cost, duration and execution or implementation of the contract, project, or work and examine all instructions, forms, terms, and project requirements in the Bidding Documents.

## 4. Corrupt, Fraudulent, Collusive, Coercive, and Obstructive Practices

The Procuring Entity, as well as the Bidders and Contractors, shall observe the highest standard of ethics during the procurement and execution of the contract. They or through an agent shall not engage in corrupt, fraudulent, collusive, coercive, and obstructive practices defined under Annex “I” of the 2016 revised IRR of RA No. 9184 or other integrity violations in competing for the Project.

## 5. Eligible Bidders

5.1. Only Bids of Bidders found to be legally, technically, and financially capable will be evaluated.

5.2. The Bidder must have an experience of having completed a Single Largest Completed Contract (SLCC) that is similar to this Project, equivalent to at least fifty percent (50%) of the ABC adjusted, if necessary, by the Bidder to current

prices using the PSA's CPI, except under conditions provided for in Section 23.4.2.4 of the 2016 revised IRR of RA No. 9184.

A contract is considered to be "similar" to the contract to be bid if it has the major categories of work stated in the **BDS**.

- 5.3. For Foreign-funded Procurement, the Procuring Entity and the foreign government/foreign or international financing institution may agree on another track record requirement, as specified in the Bidding Document prepared for this purpose.
- 5.4. The Bidders shall comply with the eligibility criteria under Section 23.4.2 of the 2016 IRR of RA No. 9184.

## **6. Origin of Associated Goods**

There is no restriction on the origin of Goods other than those prohibited by a decision of the UN Security Council taken under Chapter VII of the Charter of the UN.

## **7. Subcontracts**

- 7.1. The Bidder may subcontract portions of the Project to the extent allowed by the Procuring Entity as stated herein, but in no case more than fifty percent (50%) of the Project.

The Procuring Entity has prescribed that:

- a. **Subcontracting is not allowed**

## **8. Pre-Bid Conference**

The Procuring Entity will hold a pre-bid conference for this Project on the March 06, 2024 at 3:00 in the afternoon at BAC Office 3rd Floor, City Hall Building, City Government of Batac and/or through videoconferencing/webcasting as indicated in paragraph 6 of the IB.

## **9. Clarification and Amendment of Bidding Documents**

Prospective bidders may request for clarification on and/or interpretation of any part of the Bidding Documents. Such requests must be in writing and received by the Procuring Entity, either at its given address or through electronic mail indicated in the **IB**, at least ten (10) calendar days before the deadline set for the submission and receipt of Bids.

## **10. Documents Comprising the Bid: Eligibility and Technical Components**

- 10.1. The first envelope shall contain the eligibility and technical documents of the Bid as specified in **Section IX. Checklist of Technical and Financial Documents**.
- 10.2. If the eligibility requirements or statements, the bids, and all other documents for submission to the BAC are in foreign language other than English, it must be accompanied by a translation in English, which shall be authenticated by the appropriate Philippine foreign service establishment, post, or the equivalent office having jurisdiction over the foreign bidder's affairs in the Philippines.

For Contracting Parties to the Apostille Convention, only the translated documents shall be authenticated through an apostille pursuant to GPPB Resolution No. 13-2019 dated 23 May 2019. The English translation shall govern, for purposes of interpretation of the bid.

- 10.3. A valid PCAB License is required, and in case of joint ventures, a valid special PCAB License, and registration for the type and cost of the contract for this Project. Any additional type of Contractor license or permit shall be indicated in the **BDS**.
- 10.4. A List of Contractor's key personnel (e.g., Project Manager, Project Engineers, Materials Engineers, and Foremen) assigned to the contract to be bid, with their complete qualification and experience data shall be provided. These key personnel must meet the required minimum years of experience set in the **BDS**.
- 10.5. A List of Contractor's major equipment units, which are owned, leased, and/or under purchase agreements, supported by proof of ownership, certification of availability of equipment from the equipment lessor/vendor for the duration of the project, as the case may be, must meet the minimum requirements for the contract set in the **BDS**.

## **11. Documents Comprising the Bid: Financial Component**

- 11.1. The second bid envelope shall contain the financial documents for the Bid as specified in **Section IX. Checklist of Technical and Financial Documents**.
- 11.2. Any bid exceeding the ABC indicated in paragraph 1 of the **IB** shall not be accepted.
- 11.3. For Foreign-funded procurement, a ceiling may be applied to bid prices provided the conditions are met under Section 31.2 of the 2016 revised IRR of RA No. 9184.

## **12. Alternative Bids**

Bidders shall submit offers that comply with the requirements of the Bidding Documents, including the basic technical design as indicated in the drawings and specifications. Unless there is a value engineering clause in the **BDS**, alternative Bids shall not be accepted.

## **13. Bid Prices**

All bid prices for the given scope of work in the Project as awarded shall be considered as fixed prices, and therefore not subject to price escalation during contract implementation, except under extraordinary circumstances as determined by the NEDA and approved by the GPPB pursuant to the revised Guidelines for Contract Price Escalation guidelines.

## **14. Bid and Payment Currencies**

- 14.1. Bid prices may be quoted in the local currency or tradeable currency accepted by the BSP at the discretion of the Bidder. However, for purposes of bid evaluation, Bids denominated in foreign currencies shall be converted to Philippine currency based on the exchange rate as published in the BSP reference rate bulletin on the day of the bid opening.

14.2. *Payment of the contract price shall be made in:*

- a. Philippine Pesos.

## **15. Bid Security**

15.1. The Bidder shall submit a Bid Securing Declaration or any form of Bid Security in the amount indicated in the **BDS**, which shall be not less than the percentage of the ABC in accordance with the schedule in the **BDS**.

15.2. The Bid and bid security shall be valid until *120 days*. Any bid not accompanied by an acceptable bid security shall be rejected by the Procuring Entity as non-responsive.

## **16. Sealing and Marking of Bids**

Each Bidder shall submit one copy of the first and second components of its Bid.

The Procuring Entity may request additional hard copies and/or electronic copies of the Bid. However, failure of the Bidders to comply with the said request shall not be a ground for disqualification.

If the Procuring Entity allows the submission of bids through online submission to the given website or any other electronic means, the Bidder shall submit an electronic copy of its Bid, which must be digitally signed. An electronic copy that cannot be opened or is corrupted shall be considered non-responsive and, thus, automatically disqualified.

## **17. Deadline for Submission of Bids**

The Bidders shall submit on the specified date and time and either at its physical address or through online submission as indicated in paragraph 7 of the **IB**.

## **18. Opening and Preliminary Examination of Bids**

18.1. The BAC shall open the Bids in public at the time, on the date, and at the place specified in paragraph 9 of the **IB**. The Bidders' representatives who are present shall sign a register evidencing their attendance. In case videoconferencing, webcasting or other similar technologies will be used, attendance of participants shall likewise be recorded by the BAC Secretariat.

In case the Bids cannot be opened as scheduled due to justifiable reasons, the rescheduling requirements under Section 29 of the 2016 revised IRR of RA No. 9184 shall prevail.

18.2. The preliminary examination of Bids shall be governed by Section 30 of the 2016 revised IRR of RA No. 9184.

## **19. Detailed Evaluation and Comparison of Bids**

19.1. The Procuring Entity's BAC shall immediately conduct a detailed evaluation of all Bids rated "*passed*" using non-discretionary pass/fail criteria. The BAC shall consider the conditions in the evaluation of Bids under Section 32.2 of 2016 revised IRR of RA No. 9184.

19.2. If the Project allows partial bids, all Bids and combinations of Bids as indicated in the **BDS** shall be received by the same deadline and opened and evaluated



simultaneously so as to determine the Bid or combination of Bids offering the lowest calculated cost to the Procuring Entity. Bid Security as required by **ITB** Clause 15 shall be submitted for each contract (lot) separately.

- 19.3. In all cases, the NFCC computation pursuant to Section 23.4.2.6 of the 2016 revised IRR of RA No. 9184 must be sufficient for the total of the ABCs for all the lots participated in by the prospective Bidder.

## **20. Post Qualification**

Within a non-extendible period of five (5) calendar days from receipt by the Bidder of the notice from the BAC that it submitted the Lowest Calculated Bid, the Bidder shall submit its latest income and business tax returns filed and paid through the BIR Electronic Filing and Payment System (eFPS), and other appropriate licenses and permits required by law and stated in the **BDS**.

## **21. Signing of the Contract**

The documents required in Section 37.2 of the 2016 revised IRR of RA No. 9184 shall form part of the Contract. Additional Contract documents are indicated in the **BDS**.

## ***Section III. Bid Data Sheet***

### **Notes on the Bid Data Sheet (BDS)**

The Bid Data Sheet (BDS) consists of provisions that supplement, amend, or specify in detail, information, or requirements included in the ITB found in Section II, which are specific to each procurement.

This Section is intended to assist the Procuring Entity in providing the specific information in relation to corresponding clauses in the ITB and has to be prepared for each specific procurement.

The Procuring Entity should specify in the BDS information and requirements specific to the circumstances of the Procuring Entity, the processing of the procurement, and the bid evaluation criteria that will apply to the Bids. In preparing the BDS, the following aspects should be checked:

- a. Information that specifies and complements provisions of the ITB must be incorporated.
- b. Amendments and/or supplements, if any, to provisions of the ITB as necessitated by the circumstances of the specific procurement, must also be incorporated.

# Bid Data Sheet

ITB Clause			
5.2	For this purpose, contracts similar to the Project refer to contracts which have the same major categories of work, which shall be: <i>Construction of Multi-Purpose Building</i>		
7.1	<i>Sub-contracting is not allowed.</i>		
10.3	<i>None</i>		
10.4	The key personnel must meet the required minimum years of experience set below:		
	<u>Key Personnel</u>	<u>General Experience</u>	<u>Relevant Experience</u>
	Project Engineer	General Construction	5 years
	Materials Engineer	General Construction	1 year
	Construction Foreman	General Construction	5 years
	Skilled Worker	General Construction	5 years
	Unskilled Laborer	General Construction	3 years
	Safety Officer II	General Construction	1 year
10.5	The minimum major equipment requirements are the following:		
	<u>Equipment</u>	<u>Capacity</u>	<u>Number of Units</u>
	Dump truck	(9.2 cu.m.)	2
	Backhoe	0.80 cu.m.	1
	Bar cutter (25 mm Maximum Rebar Ø (Grade 60)	Single Phase	1
	Bar bender (25 mm Maximum rebar Ø)	Three Phase	1
	Oxygen/Acetylene Cutter		1
	Cutting Outfit		1
	Welding Machine (Electric Driven/DC Output	500 Amp	1
	One Bagger Mixer	4-6 ft <sup>3</sup> /min	1
	Concrete Vibrator		2
	Concrete Chipper/Jack Hammer		1
	Plate Compactor (400- 500 Gasoline Engine)	5 hp	1
12	<i>Value Engineering not allowed.</i>		
15.1	The bid security shall be in the form of a Bid Securing Declaration or any of the following forms and amounts: a. The amount of not less than 99,905.00 if bid security is in cash, cashier's/manager's check, bank draft/guarantee or irrevocable letter of credit;		

	b. The amount of not less than 249,763.00 if bid security is in Surety Bond.
19.2	Partial bids are allowed not allowed.
20	<i>None</i>
21	Additional contract documents relevant to the Project that may be required by existing laws and/or the Procuring Entity, such as construction schedule and S-curve, manpower schedule, construction methods, equipment utilization schedule, construction safety and health program approved by the DOLE, and other acceptable tools of project scheduling.

## ***Section IV. General Conditions of Contract***

### **Notes on the General Conditions of Contract**

The General Conditions of Contract (GCC) in this Section, read in conjunction with the Special Conditions of Contract in Section V and other documents listed therein, should be a complete document expressing all the rights and obligations of the parties.

Matters governing performance of the Contractor, payments under the contract, or matters affecting the risks, rights, and obligations of the parties under the contract are included in the GCC and Special Conditions of Contract.

Any complementary information, which may be needed, shall be introduced only through the Special Conditions of Contract.

## 1. **Scope of Contract**

This Contract shall include all such items, although not specifically mentioned, that can be reasonably inferred as being required for its completion as if such items were expressly mentioned herein. All the provisions of RA No. 9184 and its 2016 revised IRR, including the Generic Procurement Manual, and associated issuances, constitute the primary source for the terms and conditions of the Contract, and thus, applicable in contract implementation. Herein clauses shall serve as the secondary source for the terms and conditions of the Contract.

This is without prejudice to Sections 74.1 and 74.2 of the 2016 revised IRR of RA No. 9184 allowing the GPPB to amend the IRR, which shall be applied to all procurement activities, the advertisement, posting, or invitation of which were issued after the effectivity of the said amendment.

## 2. **Sectional Completion of Works**

If sectional completion is specified in the **Special Conditions of Contract (SCC)**, references in the Conditions of Contract to the Works, the Completion Date, and the Intended Completion Date shall apply to any Section of the Works (other than references to the Completion Date and Intended Completion Date for the whole of the Works).

## 3. **Possession of Site**

3.1 The Procuring Entity shall give possession of all or parts of the Site to the Contractor based on the schedule of delivery indicated in the **SCC**, which corresponds to the execution of the Works. If the Contractor suffers delay or incurs cost from failure on the part of the Procuring Entity to give possession in accordance with the terms of this clause, the Procuring Entity's Representative shall give the Contractor a Contract Time Extension and certify such sum as fair to cover the cost incurred, which sum shall be paid by Procuring Entity.

3.2 If possession of a portion is not given by the above date, the Procuring Entity will be deemed to have delayed the start of the relevant activities. The resulting adjustments in contract time to address such delay may be addressed through contract extension provided under Annex "E" of the 2016 revised IRR of RA No. 9184.

## 4. **The Contractor's Obligations**

The Contractor shall employ the key personnel named in the Schedule of Key Personnel indicating their designation, in accordance with **ITB** Clause 10.3 and specified in the **BDS**, to carry out the supervision of the Works.

The Procuring Entity will approve any proposed replacement of key personnel only if their relevant qualifications and abilities are equal to or better than those of the personnel listed in the Schedule.

## 5. **Performance Security**

- 5.1. Within ten (10) calendar days from receipt of the Notice of Award from the Procuring Entity but in no case later than the signing of the contract by both parties, the successful Bidder shall furnish the performance security in any of the forms prescribed in Section 39 of the 2016 revised IRR.
- 5.2. The Contractor, by entering into the Contract with the Procuring Entity, acknowledges the right of the Procuring Entity to institute action pursuant to RA No. 3688 against any subcontractor be they an individual, firm, partnership, corporation, or association supplying the Contractor with labor, materials and/or equipment for the performance of this Contract.

## **6. Site Investigation Reports**

The Contractor, in preparing the Bid, shall rely on any Site Investigation Reports referred to in the SCC supplemented by any information obtained by the Contractor.

## **7. Warranty**

- 7.1. In case the Contractor fails to undertake the repair works under Section 62.2.2 of the 2016 revised IRR, the Procuring Entity shall forfeit its performance security, subject its property(ies) to attachment or garnishment proceedings, and perpetually disqualify it from participating in any public bidding. All payables of the GOP in his favor shall be offset to recover the costs.
- 7.2. The warranty against Structural Defects/Failures, except that occasioned-on force majeure, shall cover the period from the date of issuance of the Certificate of Final Acceptance by the Procuring Entity. Specific duration of the warranty is found in the SCC.

## **8. Liability of the Contractor**

Subject to additional provisions, if any, set forth in the SCC, the Contractor's liability under this Contract shall be as provided by the laws of the Republic of the Philippines.

If the Contractor is a joint venture, all partners to the joint venture shall be jointly and severally liable to the Procuring Entity.

## **9. Termination for Other Causes**

Contract termination shall be initiated in case it is determined *prima facie* by the Procuring Entity that the Contractor has engaged, before, or during the implementation of the contract, in unlawful deeds and behaviors relative to contract acquisition and implementation, such as, but not limited to corrupt, fraudulent, collusive, coercive, and obstructive practices as stated in ITB Clause 4.

## **10. Dayworks**

Subject to the guidelines on Variation Order in Annex “E” of the 2016 revised IRR of RA No. 9184, and if applicable as indicated in the **SCC**, the Dayworks rates in the Contractor’s Bid shall be used for small additional amounts of work only when the Procuring Entity’s Representative has given written instructions in advance for additional work to be paid for in that way.

## **11. Program of Work**

11.1. The Contractor shall submit to the Procuring Entity’s Representative for approval the said Program of Work showing the general methods, arrangements, order, and timing for all the activities in the Works. The submissions of the Program of Work are indicated in the **SCC**.

11.2. The Contractor shall submit to the Procuring Entity’s Representative for approval an updated Program of Work at intervals no longer than the period stated in the **SCC**. If the Contractor does not submit an updated Program of Work within this period, the Procuring Entity’s Representative may withhold the amount stated in the **SCC** from the next payment certificate and continue to withhold this amount until the next payment after the date on which the overdue Program of Work has been submitted.

## **12. Instructions, Inspections and Audits**

The Contractor shall permit the GOP or the Procuring Entity to inspect the Contractor’s accounts and records relating to the performance of the Contractor and to have them audited by auditors of the GOP or the Procuring Entity, as may be required.

## **13. Advance Payment**

The Procuring Entity shall, upon a written request of the Contractor which shall be submitted as a Contract document, make an advance payment to the Contractor in an amount not exceeding fifteen percent (15%) of the total contract price, to be made in lump sum, or at the most two installments according to a schedule specified in the **SCC**, subject to the requirements in Annex “E” of the 2016 revised IRR of RA No. 9184.

## **14. Progress Payments**

The Contractor may submit a request for payment for Work accomplished. Such requests for payment shall be verified and certified by the Procuring Entity’s Representative/Project Engineer. Except as otherwise stipulated in the **SCC**, materials and equipment delivered on the site but not completely put in place shall not be included for payment.

## **15. Operating and Maintenance Manuals**

15.1. If required, the Contractor will provide “as built” Drawings and/or operating and maintenance manuals as specified in the **SCC**.



- 15.2. If the Contractor does not provide the Drawings and/or manuals by the dates stated above, or they do not receive the Procuring Entity's Representative's approval, the Procuring Entity's Representative may withhold the amount stated in the **SCC** from payments due to the Contractor.

## ***Section V. Special Conditions of Contract***

### **Notes on the Special Conditions of Contract**

Similar to the BDS, the clauses in this Section are intended to assist the Procuring Entity in providing contract-specific information in relation to corresponding clauses in the GCC found in Section IV.

The Special Conditions of Contract (SCC) complement the GCC, specifying contractual requirements linked to the special circumstances of the Procuring Entity, the Procuring Entity's country, the sector, and the Works procured. In preparing this Section, the following aspects should be checked:

- a. Information that complements provisions of the GCC must be incorporated.
- b. Amendments and/or supplements to provisions of the GCC as necessitated by the circumstances of the specific purchase, must also be incorporated.

However, no special condition which defeats or negates the general intent and purpose of the provisions of the GCC should be incorporated herein.

# Special Conditions of Contract

GCC Clause	
2	<i>The intended completion date is <b>One Hundred Seventy-Three (173) calendar days from the Effective Date of the Contract.</b></i>
4.1	N/A
6	N/A
7.2	Fifteen (15) years.
10	Dayworks are applicable at the rate shown in the Contractor's original Bid.
11.1	The Contractor shall submit the Program of Work to the Procuring Entity's Representative within <b>Seven (7)</b> days of delivery of the Notice of Award.
11.2	N/A
13	The amount of the advance payment <b><i>shall not exceed 15% of the total contract price and schedule of payment.</i></b>
14	<i>Not Allowed</i>
15.1	N/A
15.2	N/A

## *Section VI. Specifications*

Republic of the Philippines  
 CITY GOVERNMENT OF PASIG  
 OFFICE OF THE CITY ENGINEER  
 Washington St., 15 Makati, City of Manila  
 Province of Rizal



**PERT-CPM**  
 CONTINUATION OF PERT/CPM  
 4th Floor, Davao, City of Manila



Prepared by  
**GERMEL P. TORRES**  
 Program 1

Checked by  
**SHARON L. VALERA**  
 City Engineer



PROJECT: CONSTRUCTION OF 3-STORY BUILDING  
ADDRESS: #14N Bay, Oanga, City of Batak  
SUBJECT: TIME/TABLEWORK SCHEDULE

CONSTRUCTION OF 3-STORY BUILDING

ITEM NO.	ITEM DESCRIPTION	DURATION	DAYS											
			1ST QUARTER	2ND QUARTER	3RD QUARTER	4TH QUARTER								
8.5	Permits and Clearances	0												
8.5	Project Record/Logbook	0.5												
8.7.01	Occupational Safety and Health Program	0.5												
8.9	Mobilization and Demobilization	5												
803.110	Site/Utility Excavation (Common Soil, Medium Excavation)	1.50												
804.110	Embankment from Structural Excavation	1.50												
804.14	Gravel Fill	6.50												
800.110.01	Structural Concrete (Cure At 28 days)	3.50												
802.110	Reinforcing Steel (Reinforced, Grade 42)	10.50												
803.11	Formwork and Scaffolding	11.00												
104.02.03	System Cell (non-load bearing including reinforcing steel)	7.50												
100.11.02	Aluminum Formwork (Grade 42, Long Length) (Type 1)	0.20												
100.11.02	Aluminum Formwork (Grade 42, Long Length) (Type 2)	4.50												
100.11.02	Aluminum Formwork (Grade 42, Long Length) (Type 3)	3.50												
100.11.02	Aluminum Formwork (Grade 42, Long Length) (Type 4)	4.50												
100.11.02	Aluminum Formwork (Grade 42, Long Length) (Type 5)	3.50												
100.11.02	Aluminum Formwork (Grade 42, Long Length) (Type 6)	3.50												
100.11.02	Aluminum Formwork (Grade 42, Long Length) (Type 7)	3.50												
100.11.02	Aluminum Formwork (Grade 42, Long Length) (Type 8)	3.50												
100.11.02	Aluminum Formwork (Grade 42, Long Length) (Type 9)	3.50												
100.11.02	Aluminum Formwork (Grade 42, Long Length) (Type 10)	3.50												
100.11.02	Aluminum Formwork (Grade 42, Long Length) (Type 11)	3.50												
100.11.02	Aluminum Formwork (Grade 42, Long Length) (Type 12)	3.50												
100.11.02	Aluminum Formwork (Grade 42, Long Length) (Type 13)	3.50												
100.11.02	Aluminum Formwork (Grade 42, Long Length) (Type 14)	3.50												
100.11.02	Aluminum Formwork (Grade 42, Long Length) (Type 15)	3.50												
100.11.02	Aluminum Formwork (Grade 42, Long Length) (Type 16)	3.50												
100.11.02	Aluminum Formwork (Grade 42, Long Length) (Type 17)	3.50												
100.11.02	Aluminum Formwork (Grade 42, Long Length) (Type 18)	3.50												
100.11.02	Aluminum Formwork (Grade 42, Long Length) (Type 19)	3.50												
100.11.02	Aluminum Formwork (Grade 42, Long Length) (Type 20)	3.50												
100.11.02	Aluminum Formwork (Grade 42, Long Length) (Type 21)	3.50												
100.11.02	Aluminum Formwork (Grade 42, Long Length) (Type 22)	3.50												
100.11.02	Aluminum Formwork (Grade 42, Long Length) (Type 23)	3.50												
100.11.02	Aluminum Formwork (Grade 42, Long Length) (Type 24)	3.50												
100.11.02	Aluminum Formwork (Grade 42, Long Length) (Type 25)	3.50												
100.11.02	Aluminum Formwork (Grade 42, Long Length) (Type 26)	3.50												
100.11.02	Aluminum Formwork (Grade 42, Long Length) (Type 27)	3.50												
100.11.02	Aluminum Formwork (Grade 42, Long Length) (Type 28)	3.50												
100.11.02	Aluminum Formwork (Grade 42, Long Length) (Type 29)	3.50												
100.11.02	Aluminum Formwork (Grade 42, Long Length) (Type 30)	3.50												
100.11.02	Aluminum Formwork (Grade 42, Long Length) (Type 31)	3.50												
100.11.02	Aluminum Formwork (Grade 42, Long Length) (Type 32)	3.50												
100.11.02	Aluminum Formwork (Grade 42, Long Length) (Type 33)	3.50												
100.11.02	Aluminum Formwork (Grade 42, Long Length) (Type 34)	3.50												
100.11.02	Aluminum Formwork (Grade 42, Long Length) (Type 35)	3.50												
100.11.02	Aluminum Formwork (Grade 42, Long Length) (Type 36)	3.50												
100.11.02	Aluminum Formwork (Grade 42, Long Length) (Type 37)	3.50												
100.11.02	Aluminum Formwork (Grade 42, Long Length) (Type 38)	3.50												
100.11.02	Aluminum Formwork (Grade 42, Long Length) (Type 39)	3.50												
100.11.02	Aluminum Formwork (Grade 42, Long Length) (Type 40)	3.50												
100.11.02	Aluminum Formwork (Grade 42, Long Length) (Type 41)	3.50												
100.11.02	Aluminum Formwork (Grade 42, Long Length) (Type 42)	3.50												
100.11.02	Aluminum Formwork (Grade 42, Long Length) (Type 43)	3.50												
100.11.02	Aluminum Formwork (Grade 42, Long Length) (Type 44)	3.50												
100.11.02	Aluminum Formwork (Grade 42, Long Length) (Type 45)	3.50												
100.11.02	Aluminum Formwork (Grade 42, Long Length) (Type 46)	3.50												
100.11.02	Aluminum Formwork (Grade 42, Long Length) (Type 47)	3.50												
100.11.02	Aluminum Formwork (Grade 42, Long Length) (Type 48)	3.50												
100.11.02	Aluminum Formwork (Grade 42, Long Length) (Type 49)	3.50												
100.11.02	Aluminum Formwork (Grade 42, Long Length) (Type 50)	3.50												
100.11.02	Aluminum Formwork (Grade 42, Long Length) (Type 51)	3.50												
100.11.02	Aluminum Formwork (Grade 42, Long Length) (Type 52)	3.50												
100.11.02	Aluminum Formwork (Grade 42, Long Length) (Type 53)	3.50												
100.11.02	Aluminum Formwork (Grade 42, Long Length) (Type 54)	3.50												
100.11.02	Aluminum Formwork (Grade 42, Long Length) (Type 55)	3.50												
100.11.02	Aluminum Formwork (Grade 42, Long Length) (Type 56)	3.50												
100.11.02	Aluminum Formwork (Grade 42, Long Length) (Type 57)	3.50												
100.11.02	Aluminum Formwork (Grade 42, Long Length) (Type 58)	3.50												
100.11.02	Aluminum Formwork (Grade 42, Long Length) (Type 59)	3.50												
100.11.02	Aluminum Formwork (Grade 42, Long Length) (Type 60)	3.50												
100.11.02	Aluminum Formwork (Grade 42, Long Length) (Type 61)	3.50												
100.11.02	Aluminum Formwork (Grade 42, Long Length) (Type 62)	3.50												
100.11.02	Aluminum Formwork (Grade 42, Long Length) (Type 63)	3.50												
100.11.02	Aluminum Formwork (Grade 42, Long Length) (Type 64)	3.50												
100.11.02	Aluminum Formwork (Grade 42, Long Length) (Type 65)	3.50												
100.11.02	Aluminum Formwork (Grade 42, Long Length) (Type 66)	3.50												
100.11.02	Aluminum Formwork (Grade 42, Long Length) (Type 67)	3.50												
100.11.02	Aluminum Formwork (Grade 42, Long Length) (Type 68)	3.50												
100.11.02	Aluminum Formwork (Grade 42, Long Length) (Type 69)	3.50												
100.11.02	Aluminum Formwork (Grade 42, Long Length) (Type 70)	3.50												
100.11.02	Aluminum Formwork (Grade 42, Long Length) (Type 71)	3.50												
100.11.02	Aluminum Formwork (Grade 42, Long Length) (Type 72)	3.50												
100.11.02	Aluminum Formwork (Grade 42, Long Length) (Type 73)	3.50												
100.11.02	Aluminum Formwork (Grade 42, Long Length) (Type 74)	3.50												
100.11.02	Aluminum Formwork (Grade 42, Long Length) (Type 75)	3.50												
100.11.02	Aluminum Formwork (Grade 42, Long Length) (Type 76)	3.50												
100.11.02	Aluminum Formwork (Grade 42, Long Length) (Type 77)	3.50												
100.11.02	Aluminum Formwork (Grade 42, Long Length) (Type 78)	3.50												
100.11.02	Aluminum Formwork (Grade 42, Long Length) (Type 79)	3.50												
100.11.02	Aluminum Formwork (Grade 42, Long Length) (Type 80)	3.50												
100.11.02	Aluminum Formwork (Grade 42, Long Length) (Type 81)	3.50												
100.11.02	Aluminum Formwork (Grade 42, Long Length) (Type 82)	3.50												
100.11.02	Aluminum Formwork (Grade 42, Long Length) (Type 83)	3.50												
100.11.02	Aluminum Formwork (Grade 42, Long Length) (Type 84)	3.50												
100.11.02	Aluminum Formwork (Grade 42, Long Length) (Type 85)	3.50												
100.11.02	Aluminum Formwork (Grade 42, Long Length) (Type 86)	3.50												
100.11.02	Aluminum Formwork (Grade 42, Long Length) (Type 87)	3.50												
100.11.02	Aluminum Formwork (Grade 42, Long Length) (Type 88)	3.50												
100.11.02	Aluminum Formwork (Grade 42, Long Length) (Type 89)	3.50												
100.11.02	Aluminum Formwork (Grade 42, Long Length) (Type 90)	3.50												
100.11.02	Aluminum Formwork (Grade 42, Long Length) (Type 91)	3.50												
100.11.02	Aluminum Formwork (Grade 42, Long Length) (Type 92)	3.50												
100.11.02	Aluminum Formwork (Grade 42, Long Length) (Type 93)	3.50												
100.11.02	Aluminum Formwork (Grade 42, Long Length) (Type 94)	3.50												
100.11.02	Aluminum Formwork (Grade 42, Long Length) (Type 95)	3.50												
100.11.02	Aluminum Formwork (Grade 42, Long Length) (Type 96)	3.50												
100.11.02	Aluminum Formwork (Grade 42, Long Length) (Type 97)	3.50												
100.11.02	Aluminum Formwork (Grade 42, Long Length) (Type 98)	3.50												
100.11.02	Aluminum Formwork (Grade 42, Long Length) (Type 99)	3.50												
100.11.02	Aluminum Formwork (Grade 42, Long Length) (Type 100)	3.50												

Manpower Mobilization Schedule  
 Construction Foreman 1  
 Skilled Worker 4  
 Unskilled Worker 4  
 FULL TIME SAFETY OFFICER 4  
 FIRE FIGHTER 4  
 Total Daily Manpower 15

Prepared by:  
 GERALD JOSE C. AGADIRACA  
 Engineer

Checked by:  
 BELONIA S. NALLITA  
 City Engineer





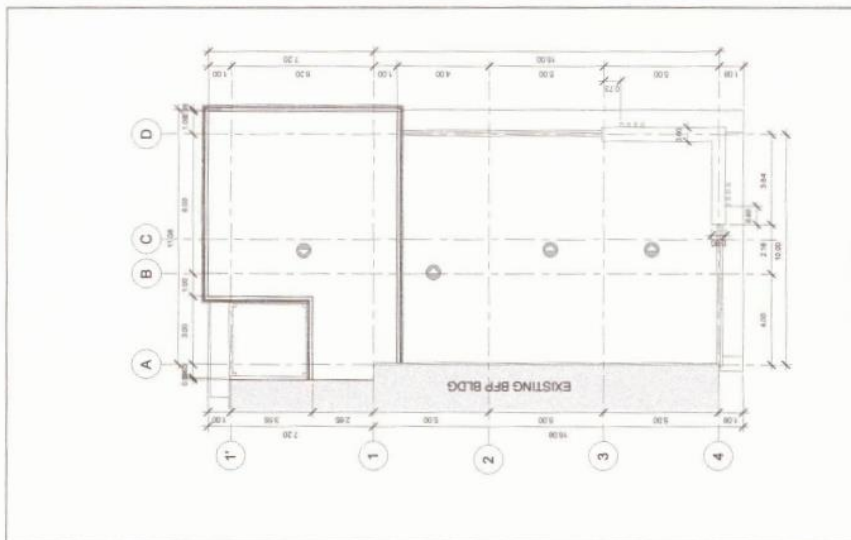




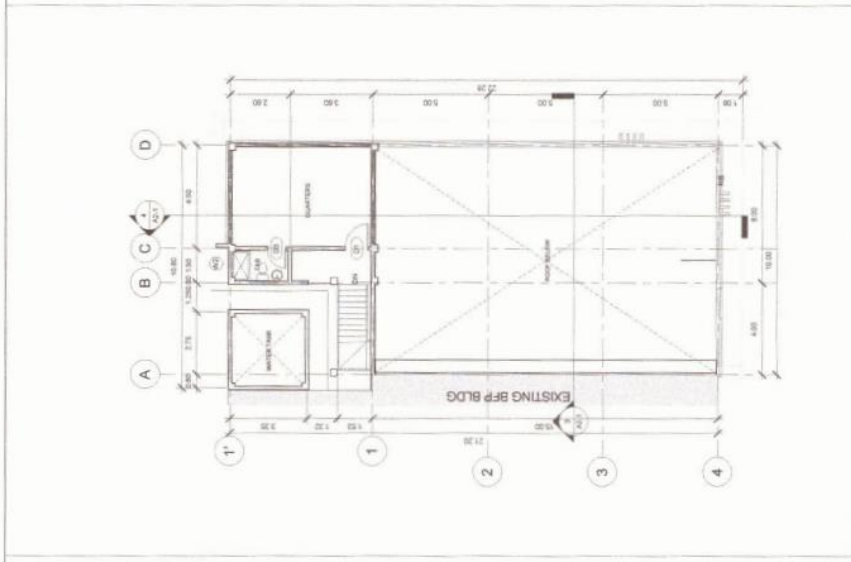


## *Section VII. Drawings*

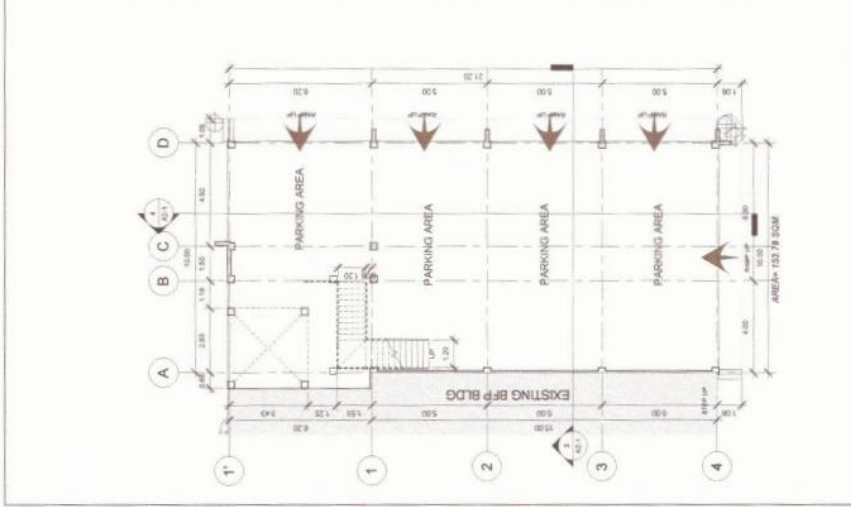




1 FLOOR PLAN  
1/8" = 1'-0"

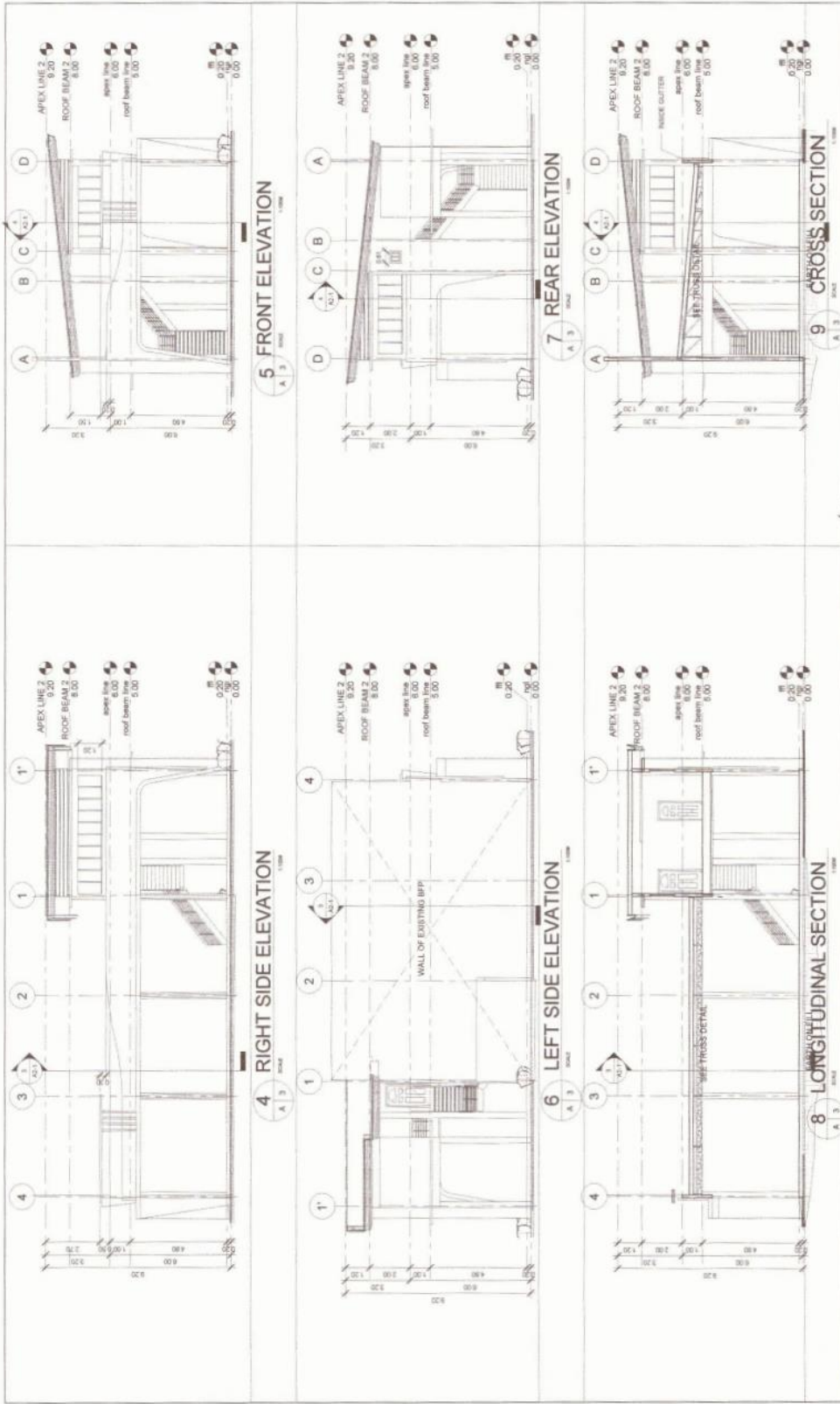


2 SECOND FLOOR PLAN  
1/8" = 1'-0"



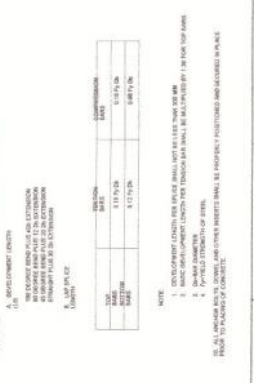
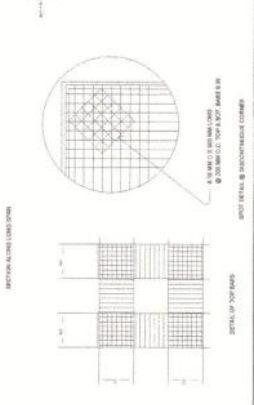
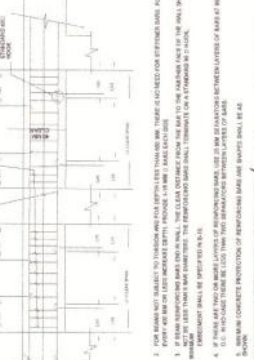
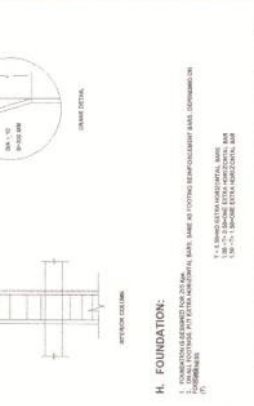
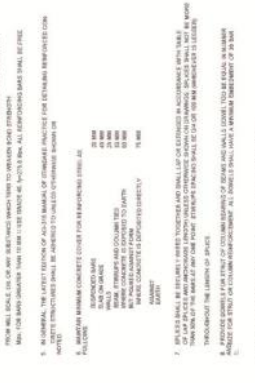
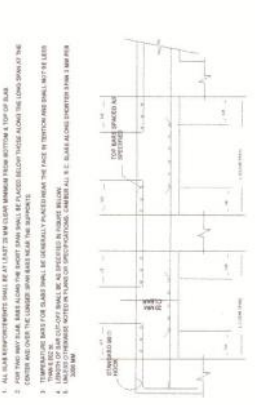
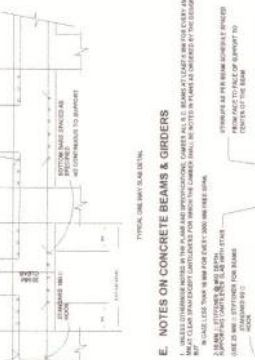
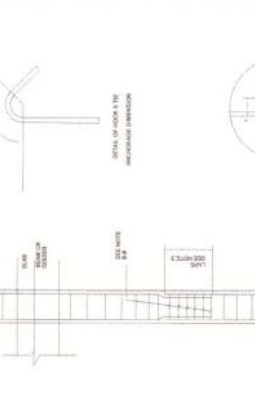
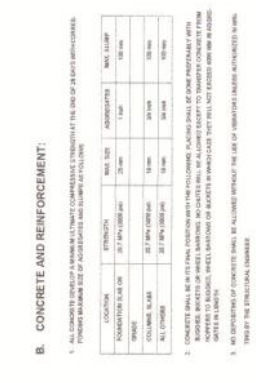
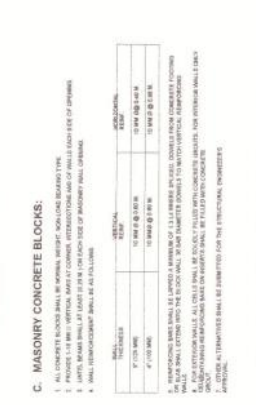
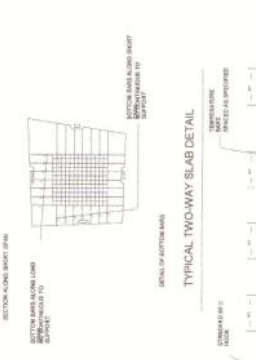
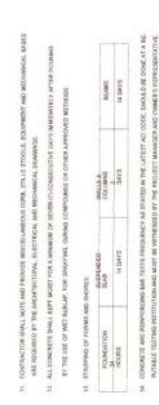
3 ROOF PLAN  
1/8" = 1'-0"

	PROJECT TITLE: <b>PROPOSED CONSTRUCTION OF TWO-STORY BLDG.</b>	SHEET NO: <b>A</b>
	PROJECT LOCATION: <b>AREA 133.78 SQM</b>	SHEET DATE: <b>A-2</b>
CITY ENGINEERING OFFICE LEGALIZATION NO. 15-148-000 CITY OF MANILA	PROJECT NO.: <b>AS SHOWN</b>	APPROVED BY:  <b>ENGR. ALBERT D. CHUA</b> CITY ENGINEER
PROJECT NO.: <b>AS SHOWN</b>	PROJECT NO.: <b>AS SHOWN</b>	RECOMMENDING APPROVAL:  <b>NOHAIL M. MARAMBA</b> CITY ENGINEER
PROJECT NO.: <b>AS SHOWN</b>	PROJECT NO.: <b>AS SHOWN</b>	CHECKED BY:  <b>HAROLD O. JALAPA</b> CITY ENGINEER
PROJECT NO.: <b>AS SHOWN</b>	PROJECT NO.: <b>AS SHOWN</b>	DRAWN BY:  <b>JAMES M. PARITU</b>



	MUNICIPAL ENGINEER <b>ENGR. ALBERT D. CHUA</b> CITY ENGINEER	PROJECT TITLE <b>PROPOSED CONSTRUCTION OF TWO-STORY BLDG.</b>	PROJECT LOCATION 14, HANGSIP, CITY OF MALACCA	SHEET NO. <b>A</b>
	CITY ENGINEERING OFFICE	PROJECT LOCATION 14, HANGSIP, CITY OF MALACCA	PROJECT NO. 14/2023	DATE 15/03/2023
MUNICIPAL ENGINEER <b>ENGR. ALBERT D. CHUA</b> CITY ENGINEER	PROJECT TITLE <b>PROPOSED CONSTRUCTION OF TWO-STORY BLDG.</b>	PROJECT LOCATION 14, HANGSIP, CITY OF MALACCA	PROJECT NO. 14/2023	SHEET NO. <b>A</b>
MUNICIPAL ENGINEER <b>ENGR. ALBERT D. CHUA</b> CITY ENGINEER	PROJECT TITLE <b>PROPOSED CONSTRUCTION OF TWO-STORY BLDG.</b>	PROJECT LOCATION 14, HANGSIP, CITY OF MALACCA	PROJECT NO. 14/2023	SHEET NO. <b>A</b>





**A. GENERAL NOTES:**

1. ALL DIMENSIONS ARE IN MILLIMETERS UNLESS OTHERWISE SPECIFIED.
2. ALL REINFORCEMENT SHALL BE PROVIDED AS SHOWN IN THE DRAWINGS.
3. ALL REINFORCEMENT SHALL BE PROVIDED AS SHOWN IN THE DRAWINGS.
4. ALL REINFORCEMENT SHALL BE PROVIDED AS SHOWN IN THE DRAWINGS.
5. ALL REINFORCEMENT SHALL BE PROVIDED AS SHOWN IN THE DRAWINGS.
6. ALL REINFORCEMENT SHALL BE PROVIDED AS SHOWN IN THE DRAWINGS.
7. ALL REINFORCEMENT SHALL BE PROVIDED AS SHOWN IN THE DRAWINGS.
8. ALL REINFORCEMENT SHALL BE PROVIDED AS SHOWN IN THE DRAWINGS.
9. ALL REINFORCEMENT SHALL BE PROVIDED AS SHOWN IN THE DRAWINGS.
10. ALL REINFORCEMENT SHALL BE PROVIDED AS SHOWN IN THE DRAWINGS.

**B. CONCRETE AND REINFORCEMENT:**

1. ALL CONCRETE SHALL BE PROVIDED AS SHOWN IN THE DRAWINGS.
2. ALL CONCRETE SHALL BE PROVIDED AS SHOWN IN THE DRAWINGS.
3. ALL CONCRETE SHALL BE PROVIDED AS SHOWN IN THE DRAWINGS.
4. ALL CONCRETE SHALL BE PROVIDED AS SHOWN IN THE DRAWINGS.
5. ALL CONCRETE SHALL BE PROVIDED AS SHOWN IN THE DRAWINGS.
6. ALL CONCRETE SHALL BE PROVIDED AS SHOWN IN THE DRAWINGS.
7. ALL CONCRETE SHALL BE PROVIDED AS SHOWN IN THE DRAWINGS.
8. ALL CONCRETE SHALL BE PROVIDED AS SHOWN IN THE DRAWINGS.
9. ALL CONCRETE SHALL BE PROVIDED AS SHOWN IN THE DRAWINGS.
10. ALL CONCRETE SHALL BE PROVIDED AS SHOWN IN THE DRAWINGS.

**C. NOTES ON CONCRETE SLAB CONSTRUCTION:**

1. ALL CONCRETE SHALL BE PROVIDED AS SHOWN IN THE DRAWINGS.
2. ALL CONCRETE SHALL BE PROVIDED AS SHOWN IN THE DRAWINGS.
3. ALL CONCRETE SHALL BE PROVIDED AS SHOWN IN THE DRAWINGS.
4. ALL CONCRETE SHALL BE PROVIDED AS SHOWN IN THE DRAWINGS.
5. ALL CONCRETE SHALL BE PROVIDED AS SHOWN IN THE DRAWINGS.
6. ALL CONCRETE SHALL BE PROVIDED AS SHOWN IN THE DRAWINGS.
7. ALL CONCRETE SHALL BE PROVIDED AS SHOWN IN THE DRAWINGS.
8. ALL CONCRETE SHALL BE PROVIDED AS SHOWN IN THE DRAWINGS.
9. ALL CONCRETE SHALL BE PROVIDED AS SHOWN IN THE DRAWINGS.
10. ALL CONCRETE SHALL BE PROVIDED AS SHOWN IN THE DRAWINGS.

**D. NOTES ON CONCRETE BEAMS & GIRDERS:**

1. ALL CONCRETE SHALL BE PROVIDED AS SHOWN IN THE DRAWINGS.
2. ALL CONCRETE SHALL BE PROVIDED AS SHOWN IN THE DRAWINGS.
3. ALL CONCRETE SHALL BE PROVIDED AS SHOWN IN THE DRAWINGS.
4. ALL CONCRETE SHALL BE PROVIDED AS SHOWN IN THE DRAWINGS.
5. ALL CONCRETE SHALL BE PROVIDED AS SHOWN IN THE DRAWINGS.
6. ALL CONCRETE SHALL BE PROVIDED AS SHOWN IN THE DRAWINGS.
7. ALL CONCRETE SHALL BE PROVIDED AS SHOWN IN THE DRAWINGS.
8. ALL CONCRETE SHALL BE PROVIDED AS SHOWN IN THE DRAWINGS.
9. ALL CONCRETE SHALL BE PROVIDED AS SHOWN IN THE DRAWINGS.
10. ALL CONCRETE SHALL BE PROVIDED AS SHOWN IN THE DRAWINGS.

**F. NOTES ON PIPES PASSING THROUGH BEAMS:**

1. ALL PIPES SHALL BE PROVIDED AS SHOWN IN THE DRAWINGS.
2. ALL PIPES SHALL BE PROVIDED AS SHOWN IN THE DRAWINGS.
3. ALL PIPES SHALL BE PROVIDED AS SHOWN IN THE DRAWINGS.
4. ALL PIPES SHALL BE PROVIDED AS SHOWN IN THE DRAWINGS.
5. ALL PIPES SHALL BE PROVIDED AS SHOWN IN THE DRAWINGS.
6. ALL PIPES SHALL BE PROVIDED AS SHOWN IN THE DRAWINGS.
7. ALL PIPES SHALL BE PROVIDED AS SHOWN IN THE DRAWINGS.
8. ALL PIPES SHALL BE PROVIDED AS SHOWN IN THE DRAWINGS.
9. ALL PIPES SHALL BE PROVIDED AS SHOWN IN THE DRAWINGS.
10. ALL PIPES SHALL BE PROVIDED AS SHOWN IN THE DRAWINGS.

**G. NOTES ON COLUMNS:**

1. ALL COLUMNS SHALL BE PROVIDED AS SHOWN IN THE DRAWINGS.
2. ALL COLUMNS SHALL BE PROVIDED AS SHOWN IN THE DRAWINGS.
3. ALL COLUMNS SHALL BE PROVIDED AS SHOWN IN THE DRAWINGS.
4. ALL COLUMNS SHALL BE PROVIDED AS SHOWN IN THE DRAWINGS.
5. ALL COLUMNS SHALL BE PROVIDED AS SHOWN IN THE DRAWINGS.
6. ALL COLUMNS SHALL BE PROVIDED AS SHOWN IN THE DRAWINGS.
7. ALL COLUMNS SHALL BE PROVIDED AS SHOWN IN THE DRAWINGS.
8. ALL COLUMNS SHALL BE PROVIDED AS SHOWN IN THE DRAWINGS.
9. ALL COLUMNS SHALL BE PROVIDED AS SHOWN IN THE DRAWINGS.
10. ALL COLUMNS SHALL BE PROVIDED AS SHOWN IN THE DRAWINGS.

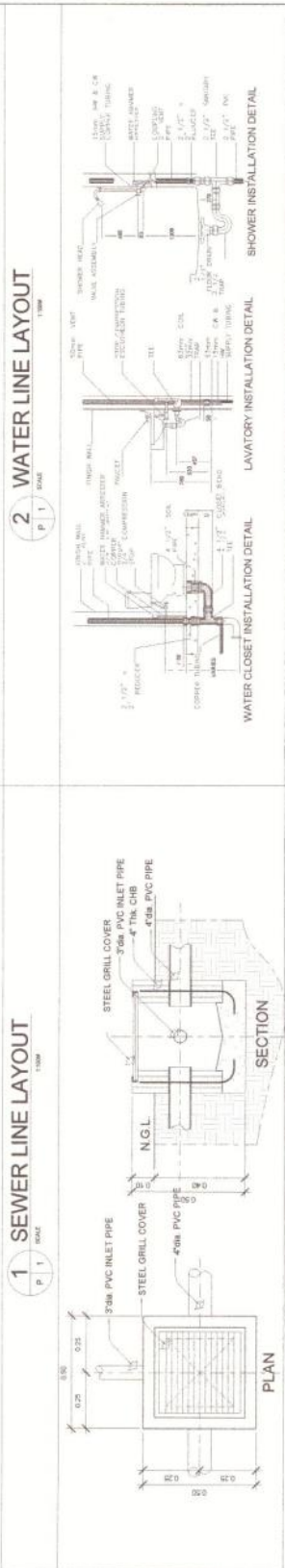
**H. FOUNDATION:**

1. ALL FOUNDATIONS SHALL BE PROVIDED AS SHOWN IN THE DRAWINGS.
2. ALL FOUNDATIONS SHALL BE PROVIDED AS SHOWN IN THE DRAWINGS.
3. ALL FOUNDATIONS SHALL BE PROVIDED AS SHOWN IN THE DRAWINGS.
4. ALL FOUNDATIONS SHALL BE PROVIDED AS SHOWN IN THE DRAWINGS.
5. ALL FOUNDATIONS SHALL BE PROVIDED AS SHOWN IN THE DRAWINGS.
6. ALL FOUNDATIONS SHALL BE PROVIDED AS SHOWN IN THE DRAWINGS.
7. ALL FOUNDATIONS SHALL BE PROVIDED AS SHOWN IN THE DRAWINGS.
8. ALL FOUNDATIONS SHALL BE PROVIDED AS SHOWN IN THE DRAWINGS.
9. ALL FOUNDATIONS SHALL BE PROVIDED AS SHOWN IN THE DRAWINGS.
10. ALL FOUNDATIONS SHALL BE PROVIDED AS SHOWN IN THE DRAWINGS.

NO.	REVISION	DATE	BY	CHKD.
1	AS SHOWN	1/1/2024	JAMES K. SIVITER	JAMES K. SIVITER
2	AS SHOWN	1/1/2024	JAMES K. SIVITER	JAMES K. SIVITER
3	AS SHOWN	1/1/2024	JAMES K. SIVITER	JAMES K. SIVITER
4	AS SHOWN	1/1/2024	JAMES K. SIVITER	JAMES K. SIVITER
5	AS SHOWN	1/1/2024	JAMES K. SIVITER	JAMES K. SIVITER
6	AS SHOWN	1/1/2024	JAMES K. SIVITER	JAMES K. SIVITER
7	AS SHOWN	1/1/2024	JAMES K. SIVITER	JAMES K. SIVITER
8	AS SHOWN	1/1/2024	JAMES K. SIVITER	JAMES K. SIVITER
9	AS SHOWN	1/1/2024	JAMES K. SIVITER	JAMES K. SIVITER
10	AS SHOWN	1/1/2024	JAMES K. SIVITER	JAMES K. SIVITER

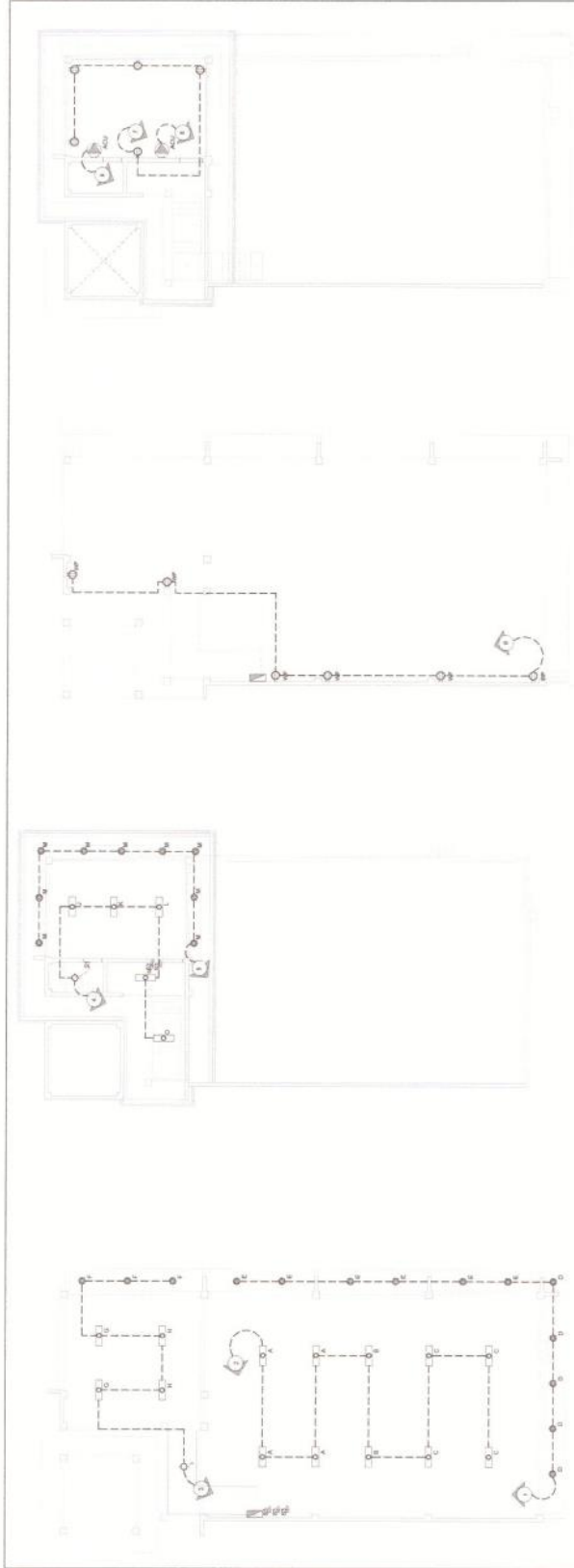

**PROPOSED:**  
**CONSTRUCTION OF**  
**TWO-STOREY BLDG.**  
 PROJECT LOCATION: 18 WAVERLEY CITY OF BAY LAC  
 PROJECT NO.: 18 WAVERLEY CITY OF BAY LAC  
 PROJECT TITLE: CONSTRUCTION OF TWO-STOREY BLDG.  
 CITY ENGINEERING OFFICE  
 18 WAVERLEY CITY OF BAY LAC  
 PROJECT NO.: 18 WAVERLEY CITY OF BAY LAC  
 PROJECT TITLE: CONSTRUCTION OF TWO-STOREY BLDG.  
 CITY ENGINEERING OFFICE  
 18 WAVERLEY CITY OF BAY LAC





	RECORD DESIGNER: <b>CITY ENGINEERING OFFICE</b> LOCATION: HWY 18 NADRD, CITY OF MANKATO	PROJECT TITLE: <b>PROPOSED CONSTRUCTION OF TWO-STORY BLDG.</b> PROJECT LOCATION: 1801 2ND AVE SW, CITY OF MANKATO	DRAWING NO.: <b>AS SHOWN</b>	SHEET COUNT: <b>AS SHOWN</b>	EXISTING:	REMARKS:	PROJECT APPROVED BY:  <b>JAMES K. KINTU</b> CITY ENGINEER	DESIGN APPROVED BY:  <b>JAMES K. KINTU</b> CITY ENGINEER	CHECKED BY:  <b>JAMES K. KINTU</b> CITY ENGINEER	DATE:	APPROVED BY:  <b>ENGR. ALBERT D. CHUA</b> CITY MAYOR	SHEET NO.: <b>P-1</b> OF <b>8</b>
--	---	---	---------------------------------	---------------------------------	-----------	----------	--	---	---	-------	---	--





1 GROUND FLOOR LIGHTING LAYOUT SCALE 1:1000  
 2 SECOND FLOOR LIGHTING LAYOUT SCALE 1:1000  
 3 GROUND FLOOR POWER LAYOUT SCALE 1:1000  
 4 SECOND FLOOR POWER LAYOUT SCALE 1:1000

- POWER SERVICE ENTRANCE
- KILOWATT HOUR METER
- PANEL BOARD
- CIRCUIT BREAKER
- CIRCUIT RUN
- SWITCH RUN
- BULB OUTLET
- PIN LIGHT
- LED PANEL LIGHT
- CONVENIENCE OUTLET
- ONE GANG SWITCH
- TWO GANG SWITCH
- THREE GANG SWITCH
- THREE WAY SWITCH
- ACU OUTLET
- CIRCUIT NUMBER

5 ELECTRICAL SYMBOL

MICHAEL JOHN D. SAGIJA  
 REGISTERED ELECTRICAL ENGINEER  
 MUNICIPALITY OF CALANTAN, CITY OF BATAKI  
 PPS NO. 0241485  
 P.R. NO. 0191512  
 REGISTERED AT: CITY OF BATAKI  
 AS SHOWING IN: TIN: 774-774  
 VALID UNTIL: 11-30-2024  
 ISSUED ON: 02-11-2024  
 REGISTERED BY: JAMES S. SIKITU  
 CITY ENGINEER



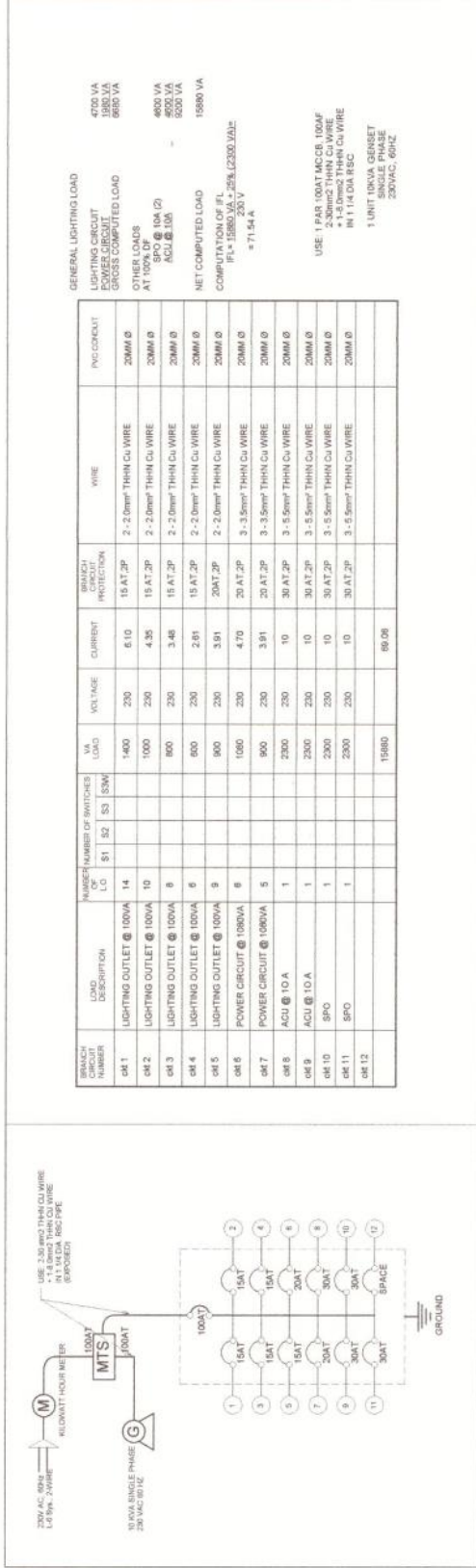
REPUBLIC OF MALAYSIA  
 CITY OF BATAKI  
 PROJECT TITLE  
**PROPOSED CONSTRUCTION OF TWO-STORY BLDG.**  
 CITY ENGINEERING OFFICE  
 PROJECT LOCATION: BUKIT BANGSAR, MALAYSIA  
 LOCATION: BUKIT BANGSAR, MALAYSIA

ARCHITECT  
 PROJECT NO.  
 TIN NO.  
 SHEET NO.

DATE OF ISSUE  
 PROJECT NO.  
 SHEET NO.  
 SHEET NO. 10  
 SHEET NO. E-1

APPROVED BY  
 ENGR. ALBERT D. CHUA  
 CITY MAYOR

DATE  
 DATE



5 SINGLE LINE DIAGRAM  
SCALE 1:1000

GENERAL LIGHTING LOAD

LIGHTING CIRCUIT  
POWER CIRCUIT  
GROSS COMPUTED LOAD

OTHER LOADS  
AT 100%  
SPO @ 10A (2)  
ACU @ 10A

NET COMPUTED LOAD  
COMPUTATION OF FL  
IFL = 15880 VA x 25% (2300 JAL)  
= 71.54 A

USE: 1 PAR 100AT MCCB 100AF  
1 PAR 100VA MCCB 100AF  
1 PAR 100VA MCCB 100AF  
IN 1 1/4 DIA RSC  
1 UNIT 10kVA GENSET  
SINGLE PHASE  
20kVAC, 60HZ

BRANCH CIRCUIT NUMBER	LOAD DESCRIPTION	NUMBER OF SWITCHES OF LO	VA LOAD	VOLTAGE	CURRENT	BRANCH PROTECTION	WIRE	TRC CONDUIT
sk1	LIGHTING OUTLET @ 100VA	14	1400	230	6.10	15 AT 2P	2 - 2.0mm <sup>2</sup> THHN CU WIRE	20MM Ø
sk2	LIGHTING OUTLET @ 100VA	10	1000	230	4.35	15 AT 2P	2 - 2.0mm <sup>2</sup> THHN CU WIRE	20MM Ø
sk3	LIGHTING OUTLET @ 100VA	6	600	230	2.61	15 AT 2P	2 - 2.0mm <sup>2</sup> THHN CU WIRE	20MM Ø
sk4	LIGHTING OUTLET @ 100VA	6	600	230	2.61	15 AT 2P	2 - 2.0mm <sup>2</sup> THHN CU WIRE	20MM Ø
sk5	LIGHTING OUTLET @ 100VA	9	900	230	3.91	20 AT 2P	3 - 3.5mm <sup>2</sup> THHN CU WIRE	20MM Ø
sk6	LIGHTING OUTLET @ 100VA	9	900	230	3.91	20 AT 2P	3 - 3.5mm <sup>2</sup> THHN CU WIRE	20MM Ø
sk7	POWER CIRCUIT @ 100VA	5	500	230	2.17	30 AT 2P	3 - 5.0mm <sup>2</sup> THHN CU WIRE	20MM Ø
sk8	ACU @ 10A	1	2300	230	10	30 AT 2P	3 - 5.0mm <sup>2</sup> THHN CU WIRE	20MM Ø
sk9	ACU @ 10A	1	2300	230	10	30 AT 2P	3 - 5.0mm <sup>2</sup> THHN CU WIRE	20MM Ø
sk10	SPO	1	2300	230	10	30 AT 2P	3 - 5.0mm <sup>2</sup> THHN CU WIRE	20MM Ø
sk11	SPO	1	2300	230	10	30 AT 2P	3 - 5.0mm <sup>2</sup> THHN CU WIRE	20MM Ø
sk12	SPACE		19800		90.08			

6 LOAD SCHEDULE AND COMPUTATION OF LOADS  
SCALE 1:1000

- ELECTRICAL WORKS INCLUDED ARE: RENEWAL, MAINTENANCE, REPAIRS, AND ADDITION OF NEW WORK. ALL WORK SHALL BE ACCORDING TO THE LATEST EDITION OF THE PHILIPPINE ELECTRICAL CODE AND THE LOCAL ELECTRIC COOPERATIVE (INEC).
- ALL WIRINGS SHALL BE INSTALLED IN STANDARD PVC PIPE SCHEDULE 40 WITH 1/2" MINIMUM CLEARANCE FROM FLOOR STRUCTURES OR FROM CEILING AND ROOFING.
- ALL SPACES SHALL BE MADE AT JUNCTION BOXES AND OTHER LINE APPROVED MATERIALS FOR PARTICULAR PURPOSES.
- INDICATED BY THE FOLLOWING:
  - WALL SWITCHES 1.375 MTS
  - CONVENIENCE OUTLETS 0.30 MTS
  - RECORDERS 1.30 MTS
  - WALL PUMPS 1.30 MTS
- SERVICE LINE TO BE USED SHALL BE 250 V, 60 HZ
- VERIFY POINT OF POWER SERVICE ENTRANCE
- WHENEVER REQUIRED OR NECESSARY, PULL BOXES AND JUNCTION BOXES SHALL BE INSTALLED AT CONVENIENT LOCATIONS, ALTHOUGH SUCH BOXES ARE NOT SHOWN.
- ALL ELECTRICAL WORKS SHALL BE DONE UNDER THE SUPERVISION OF A DULY LICENSED ELECTRICAL ENGINEER OR MASTER ELECTRICIAN.



7 LOCATION PLAN  
SCALE 1:1000

8 ELECTRICAL NOTES  
SCALE 1:1000

REPUBLIC OF THE PHILIPPINES  
CITY ENGINEERING OFFICE  
PROPOSED: CONSTRUCTION OF TWO-STOREY BLDG.  
LOCATION: BAYAN LAMBANG, CANTON BAYAN, CITY OF BATAK

PROJECT TITLE: CONSTRUCTION OF TWO-STOREY BLDG.  
PROJECT LOCATION: BAYAN LAMBANG, CANTON BAYAN, CITY OF BATAK

PROJECT NO.: 197552  
ISSUED ON: 17 FEBRUARY 2024  
DATE OF ISSUE: 17 FEBRUARY 2024

REGISTERED ELECTRICAL ENGINEER  
MICHAEL JOHN D. TADFA  
REG. NO. 0047483  
VALID UNTIL: 17 FEBRUARY 2024

REGISTERED ELECTRICAL ENGINEER  
ENGR. ALBERT D. CHUA  
REG. NO. 0047483  
VALID UNTIL: 17 FEBRUARY 2024

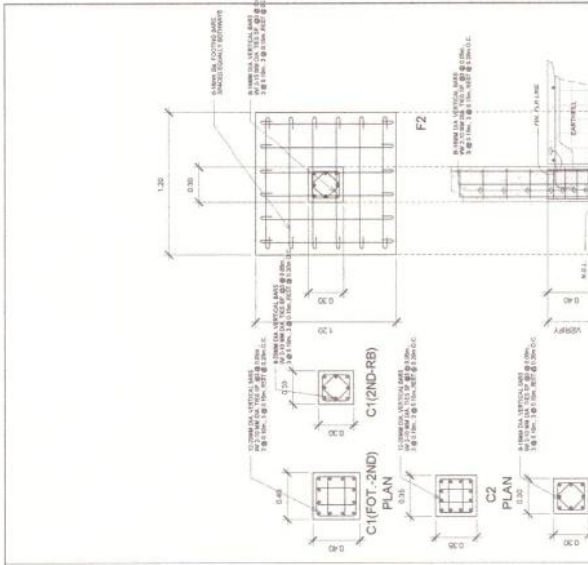
APPROVED BY: ENGR. ALBERT D. CHUA  
CITY MAYOR

RECOMMENDING APPROVAL: ENGR. ALBERT D. CHUA  
CITY MAYOR

DESIGNED BY: JAMES M. PROTU  
CITY ENGINEER

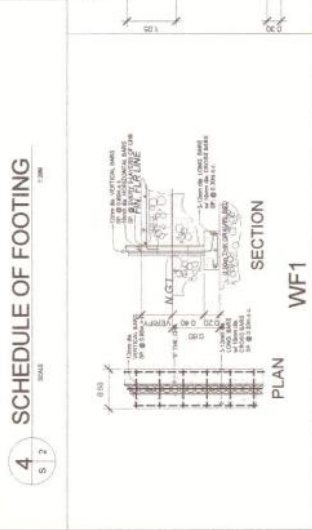
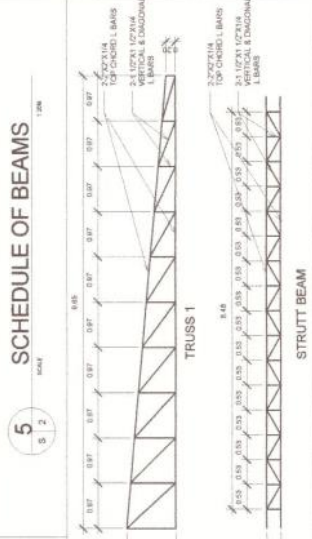
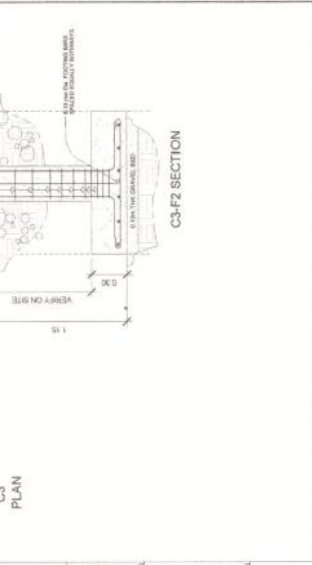
SCALE: 1:1000

DATE: E-2 11



BEAM	SECTION 1	SECTION 2	SECTION 3	DIMENSION (M)	STIRRUPS
1	3-20MMAG 3-16MMAG 3-12MMAG TOP 3-20MMAG 3-16MMAG 3-12MMAG BOT	3-20MMAG 3-16MMAG 3-12MMAG TOP 3-20MMAG 3-16MMAG 3-12MMAG BOT	6-20MMAG 3-16MMAG 3-12MMAG TOP 6-20MMAG 3-16MMAG 3-12MMAG BOT	BREATH 25	HT 50
2	3-20MMAG 3-16MMAG 3-12MMAG TOP 3-20MMAG 3-16MMAG 3-12MMAG BOT	3-20MMAG 3-16MMAG 3-12MMAG TOP 3-20MMAG 3-16MMAG 3-12MMAG BOT	3-20MMAG 3-16MMAG 3-12MMAG TOP 3-20MMAG 3-16MMAG 3-12MMAG BOT	25	40
3	3-20MMAG 3-16MMAG 3-12MMAG TOP 3-20MMAG 3-16MMAG 3-12MMAG BOT	3-20MMAG 3-16MMAG 3-12MMAG TOP 3-20MMAG 3-16MMAG 3-12MMAG BOT	3-20MMAG 3-16MMAG 3-12MMAG TOP 3-20MMAG 3-16MMAG 3-12MMAG BOT	25	35
4	3-20MMAG 3-16MMAG 3-12MMAG TOP 3-20MMAG 3-16MMAG 3-12MMAG BOT	3-20MMAG 3-16MMAG 3-12MMAG TOP 3-20MMAG 3-16MMAG 3-12MMAG BOT	3-20MMAG 3-16MMAG 3-12MMAG TOP 3-20MMAG 3-16MMAG 3-12MMAG BOT	25	35
TB1	3-20MMAG 3-16MMAG 3-12MMAG TOP 3-20MMAG 3-16MMAG 3-12MMAG BOT	3-20MMAG 3-16MMAG 3-12MMAG TOP 3-20MMAG 3-16MMAG 3-12MMAG BOT	3-20MMAG 3-16MMAG 3-12MMAG TOP 3-20MMAG 3-16MMAG 3-12MMAG BOT	25	40
TB2	3-20MMAG 3-16MMAG 3-12MMAG TOP 3-20MMAG 3-16MMAG 3-12MMAG BOT	3-20MMAG 3-16MMAG 3-12MMAG TOP 3-20MMAG 3-16MMAG 3-12MMAG BOT	3-20MMAG 3-16MMAG 3-12MMAG TOP 3-20MMAG 3-16MMAG 3-12MMAG BOT	20	35
TB3	3-20MMAG 3-16MMAG 3-12MMAG TOP 3-20MMAG 3-16MMAG 3-12MMAG BOT	3-20MMAG 3-16MMAG 3-12MMAG TOP 3-20MMAG 3-16MMAG 3-12MMAG BOT	3-20MMAG 3-16MMAG 3-12MMAG TOP 3-20MMAG 3-16MMAG 3-12MMAG BOT	25	35
RB1	3-20MMAG 3-16MMAG 3-12MMAG TOP 3-20MMAG 3-16MMAG 3-12MMAG BOT	3-20MMAG 3-16MMAG 3-12MMAG TOP 3-20MMAG 3-16MMAG 3-12MMAG BOT	3-20MMAG 3-16MMAG 3-12MMAG TOP 3-20MMAG 3-16MMAG 3-12MMAG BOT	20	40
RB2	3-20MMAG 3-16MMAG 3-12MMAG TOP 3-20MMAG 3-16MMAG 3-12MMAG BOT	3-20MMAG 3-16MMAG 3-12MMAG TOP 3-20MMAG 3-16MMAG 3-12MMAG BOT	3-20MMAG 3-16MMAG 3-12MMAG TOP 3-20MMAG 3-16MMAG 3-12MMAG BOT	20	35

MARK	TYPE	DIMENSION (M)			REINFORCEMENT			REMARKS
		W	L	H	NO.	SIZE	TYPE	
F1	□	1.7	0.4	0.4	9	9	18	CENTER ALIGN
F2	□	1.2	0.30	0.30	6	6	15	CENTER ALIGN
F3	□	1.2	0.40	0.40	6	8	15	CENTER ALIGN
F4	□	2.2	0.60	0.40	12	14	15	CENTER ALIGN

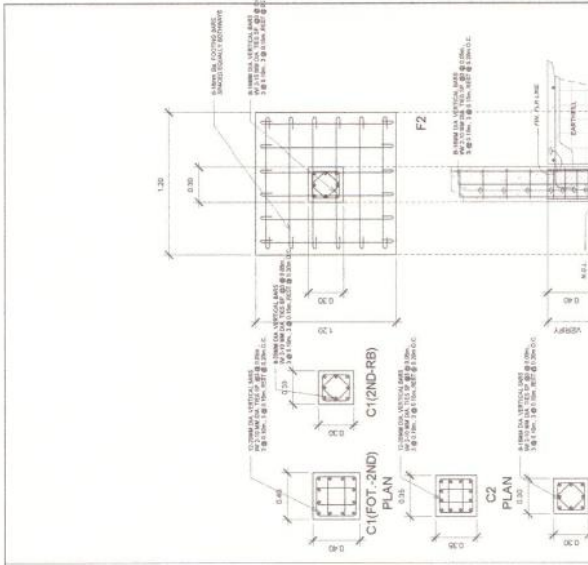


REPUBLIC OF THE PHILIPPINES CITY ENGINEERING OFFICE EDUCATION BLDG. 1, SERRAVALLE, CITY OF MANILA	PROJECT TITLE PROPOSED: CONSTRUCTION OF TWO-STORY BLDG. PROJECT LOCATION: BAYAN LARANG, CITY OF MANILA	APPROVED: ENGR. ALBERT D. CHUA CITY MANOR	RECOMMENDING APPROVAL: NOELAN M. HANAHAN CITY ENGINEER	APPROVED BY: ENGR. ALBERT D. CHUA CITY MANOR	SHEET NO. S-2	TOTAL SHEETS 6
---	--	---	--	--	------------------	-------------------

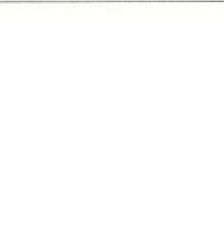
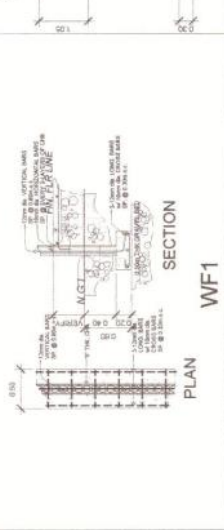
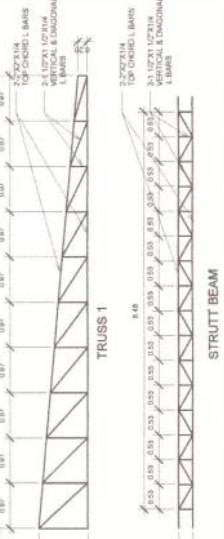
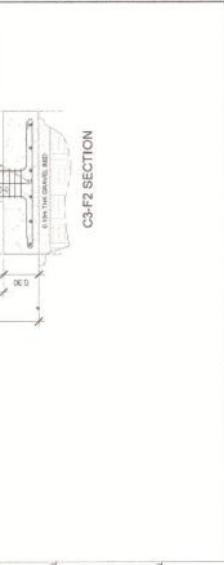
REPUBLIC OF THE PHILIPPINES CITY ENGINEERING OFFICE EDUCATION BLDG. 1, SERRAVALLE, CITY OF MANILA	PROJECT TITLE PROPOSED: CONSTRUCTION OF TWO-STORY BLDG. PROJECT LOCATION: BAYAN LARANG, CITY OF MANILA	APPROVED: ENGR. ALBERT D. CHUA CITY MANOR	RECOMMENDING APPROVAL: NOELAN M. HANAHAN CITY ENGINEER	APPROVED BY: ENGR. ALBERT D. CHUA CITY MANOR	SHEET NO. S-2	TOTAL SHEETS 6
---	--	---	--	--	------------------	-------------------

REPUBLIC OF THE PHILIPPINES CITY ENGINEERING OFFICE EDUCATION BLDG. 1, SERRAVALLE, CITY OF MANILA	PROJECT TITLE PROPOSED: CONSTRUCTION OF TWO-STORY BLDG. PROJECT LOCATION: BAYAN LARANG, CITY OF MANILA	APPROVED: ENGR. ALBERT D. CHUA CITY MANOR	RECOMMENDING APPROVAL: NOELAN M. HANAHAN CITY ENGINEER	APPROVED BY: ENGR. ALBERT D. CHUA CITY MANOR	SHEET NO. S-2	TOTAL SHEETS 6
---	--	---	--	--	------------------	-------------------





BEAM	SECTION 1	SECTION 2	SECTION 3	DIMENSION (M)	STIRRUPS
1	3-20MM TOP 3-16MM BOT 2-10MM BOT	3-20MM TOP 3-16MM BOT 2-10MM BOT	6-20MM TOP 3-16MM BOT 2-10MM BOT	BREATH 25 HT 50	
2	3-20MM TOP 3-16MM BOT 2-10MM BOT	3-20MM TOP 3-16MM BOT 2-10MM BOT	3-20MM TOP 3-16MM BOT 2-10MM BOT	25 40	use 10mm stirrups @ 150mm
3	3-20MM TOP 3-16MM BOT 2-10MM BOT	3-20MM TOP 3-16MM BOT 2-10MM BOT	3-20MM TOP 3-16MM BOT 2-10MM BOT	25 35	
4	2-10MM TOP 2-10MM BOT	2-10MM TOP 2-10MM BOT	2-10MM TOP 2-10MM BOT	25 35	
TB1	3-20MM TOP 3-16MM BOT 2-10MM BOT	3-20MM TOP 3-16MM BOT 2-10MM BOT	3-20MM TOP 3-16MM BOT 2-10MM BOT	25 40	
TB2	2-20MM TOP 2-16MM BOT 2-10MM BOT	2-20MM TOP 2-16MM BOT 2-10MM BOT	2-20MM TOP 2-16MM BOT 2-10MM BOT	20 35	
TB3	2-20MM TOP 2-16MM BOT 2-10MM BOT	2-20MM TOP 2-16MM BOT 2-10MM BOT	2-20MM TOP 2-16MM BOT 2-10MM BOT	25 35	
RB1	4-20MM TOP 2-20MM BOT	4-20MM TOP 2-20MM BOT	4-20MM TOP 2-20MM BOT	20 40	
RB2	3-16MM TOP 2-16MM BOT	3-16MM TOP 2-16MM BOT	3-16MM TOP 2-16MM BOT	20 35	



8	8	2	8	2
---	---	---	---	---

7	7	2	7	2
---	---	---	---	---

6	6	2	6	2
---	---	---	---	---

5	5	2	5	2
---	---	---	---	---

REPUBLIC OF THE PHILIPPINES  
CITY ENGINEERING OFFICE  
PROPOSED: CONSTRUCTION OF TWO-STORY BLDG.  
PROJECT LOCATION: BAYAN LAMBANG AND CITY OF ALBAY  
CITY ENGINEER: **ENGR. ALBERT D. CHUA**  
CITY MAYOR

RECOMMENDING APPROVAL: **NOEL M. HANAHAN**  
CITY ENGINEER  
CHECKED: **JACK L. REYAL**  
CITY ENGINEER  
DESIGNED BY: **JAMES A. MARIANO**  
CITY ENGINEER

REMARKS: APPROVED FOR CONSTRUCTION  
DATE: 10/10/2023

REMARKS: APPROVED FOR CONSTRUCTION  
DATE: 10/10/2023





## *Section VIII. Bill of Quantities*

ITEM	DESCRIPTION	UNIT	QUANTITY	UNIT PRICE (Pesos)	AMOUNT PESOS
B.3	Permits and Clearances	L.s.	1.0	In words: <u>Pesos</u>  <hr/> In Figures: <u>Php</u>	In Figures: <u>Php</u>
B.5	Project Billboard/ Signboard	Ea.	1.0	In words: <u>Pesos</u>  <hr/> In Figures: <u>Php</u>	In Figures: <u>Php</u>
B.7(2)	Occupational Safety and Health	L.S.	1.0	In words: <u>Pesos</u>  <hr/> In Figures: <u>Php</u>	In Figures: <u>Php.</u>
B.9	Mobilization / Demobilization	L.S.	1.0	In words: <u>Pesos</u>  <hr/> In Figures: <u>Php</u>	In Figures: <u>Php.</u>
803(1)a	Structure Excavation (Common Soil, Manual Excavation)	cu.m.	129.86	In words: <u>Pesos</u>  <hr/> In Figures: <u>Php</u>	In Figures: <u>Php.</u>
804(1)a	Embankment from Structure Excavation	cu.m.	120.19	In words: <u>Pesos</u>  <hr/> In Figures: <u>Php</u>	In Figures: <u>Php.</u>

804(4)	Gravel fill	cu.m.	62.00	In words: <u>Pesos</u> <hr/> In Figures: <u>Php</u>	In Figures: <u>Php.</u>
900(1)c1	Structural Concrete (Class A), 28 days	cu.m.	85.97	In words: <u>Pesos</u> <hr/> In Figures: <u>Php</u>	In Figures: <u>Php.</u>
902(1)a	Reinforcing Steel (Deformed), Grade 40	kgs.	12,402.55	In words: <u>Pesos</u> <hr/> In Figures: <u>Php</u>	In Figures: <u>Php.</u>
903(1)	Formworks and Falseworks	sq.m.	362.19	In words: <u>Pesos</u> <hr/> In Figures: <u>Php</u>	In Figures: <u>Php.</u>
1046(2)a 2	150mm CHB Non-Load Bearing (including Reinforcing steel bar)	sq.m.	204.70	In words: <u>Pesos</u> <hr/> In Figures: <u>Php</u>	In Figures: <u>Php.</u>
1008(1)c	Aluminum Glass Window, awning type	sq.m.	12.50	In words: <u>Pesos</u> <hr/> In Figures: <u>Php</u>	In Figures: <u>Php.</u>
1010(2)b	Wood Panel Doors	sq.m.	5.90	In words: <u>Pesos</u> <hr/> In Figures: <u>Php</u>	In Figures: <u>Php.</u>

1003(1)b 1	Ceiling (Metal Frame)	sq.m.	78.74	In words: <u>Pesos</u>  In Figures: <u>Php</u>	In Figures: <u>Php.</u>	
1018(2)	Unglazed Tiles	sq.m.	51.90	In words: <u>Pesos</u>  In Figures: <u>Php</u>	In Figures: <u>Php.</u>	
1018(5)	Glazed Tiles	sq.m.	12.80	In words: <u>Pesos</u>  In Figures: <u>Php</u>	In Figures: <u>Php.</u>	
1027(1)	Cement Plaster Finish	sq.m.	308.88	In words: <u>Pesos</u>  In Figures: <u>Php</u>	In Figures: <u>Php.</u>	
1053(2)	Aluminum Cladding	l.s.	1.00	In words: <u>Pesos</u>  In Figures: <u>Php</u>	In Figures: <u>Php.</u>	
1053(4)	Tubular Steel Handrails and grills	lot	1.00	In words: <u>Pesos</u>  In Figures: <u>Php</u>	In Figures: <u>Php.</u>	
1032(1)a	Painting Works (Masonry/Concrete )	sq.m.	308.88	In words: <u>Pesos</u>	In Figures: <u>Php.</u>	

				<hr/> In Figures: <u>Php</u>	
1032(1)b	Wood Painting	sq.m.	47.35	In words: <u>Pesos</u> <hr/> In Figures: <u>Php</u>	In Figures: <u>Php.</u>
1032(1)c	Painting Works (Steel)	sq.m.	342.33	In words: <u>Pesos</u> <hr/> In Figures: <u>Php</u>	In Figures: <u>Php.</u>
1003(11)al	Fascia Board (19 mm, Fiber Cement Board)	l.m.	54.80	In words: <u>Pesos</u> <hr/> In Figures: <u>Php</u>	In Figures: <u>Php.</u>
1013(2)a1	Fabricated Metal Roofing Accessory (Flashing/Ridge/Hip Rolls GA 26)	l.m.	35.00	In words: <u>Pesos</u> <hr/> In Figures: <u>Php</u>	In Figures: <u>Php.</u>
1013(2)b1	Fabricated Metal Roofing Accessory (Flashing GA 24)	l.m.	54.80	In words: <u>Pesos</u> <hr/> In Figures: <u>Php</u>	In Figures: <u>Php.</u>
1014(1)b2	Prepainted Metal Sheets, (Long Span, Rib Type, Above 0.427 mm thk)	sq.m.	231.34	In words: <u>Pesos</u> <hr/> In Figures: <u>Php</u>	In Figures: <u>Php.</u>
1038(1)	Reflective Insulation	sq.m.	231.34	In words: <u>Pesos</u>	In Figures: <u>Php.</u>

				<hr/> In Figures: <u>Php</u>	
1047(2)	Structural Steel	kgs.	4,992.57	In words: <u>Pesos</u> <hr/> In Figures: <u>Php</u>	In Figures: <u>Php.</u>
1100(10)	Conduits, Boxes & Fittings (Conduit Works/Conduit Rough-In)	l.s.	1.0	In words: <u>Pesos</u> <hr/> In Figures: <u>Php</u>	In Figures: <u>Php.</u>
1101(33)	Wires and Wiring Devices	l.s.	1.0	In words: <u>Pesos</u> <hr/> In Figures: <u>Php</u>	In Figures: <u>Php.</u>
1102(1)	Panel Board with Main & Branch Breakers	l.s.	1.0	In words: <u>Pesos</u> <hr/> In Figures: <u>Php</u>	In Figures: <u>Php.</u>
1103(1)	Lighting Fixtures and Lamps	l.s.	1.0	In words: <u>Pesos</u> <hr/> In Figures: <u>Php</u>	In Figures: <u>Php.</u>
1001(9)	Storm Drainage and Downspout	l.s.	1.0	In words: <u>Pesos</u> <hr/> In Figures: <u>Php</u>	In Figures: <u>Php.</u>

1001(8)	Sewer Line Works	I.s.	1.0	In words: <u>Pesos</u> <hr/> In Figures: <u>Php</u>	In Figures: <u>Php.</u>
1001(110)	Septic Vault (Concrete/CHB)	I.s.	1.0	In words: <u>Pesos</u> <hr/> In Figures: <u>Php</u>	In Figures: <u>Php.</u>
1002(24)	Cold Water Lines	I.s.	1.0	In words: <u>Pesos</u> <hr/> In Figures: <u>Php</u>	In Figures: <u>Php.</u>
1208(1)	Fire Alarm System	I.s.	1.0	In words: <u>Pesos</u> <hr/> In Figures: <u>Php</u>	In Figures: <u>Php.</u>

## ***Section IX. Checklist of Technical and Financial Documents***

### **Notes on the Checklist of Technical and Financial Documents**

The prescribed documents in the checklist are mandatory to be submitted in the Bid, but shall be subject to the following:

- a. GPPB Resolution No. 09-2020 on the efficient procurement measures during a State of Calamity or other similar issuances that shall allow the use of alternate documents in lieu of the mandated requirements; or
- b. any subsequent GPPB issuances adjusting the documentary requirements after the effectivity of the adoption of the PBDs.

The BAC shall be checking the submitted documents of each Bidder against this checklist to ascertain if they are all present, using a non-discretionary “pass/fail” criterion pursuant to Section 30 of the 2016 revised IRR of RA No. 9184.

# Checklist of Technical and Financial Documents

## I. TECHNICAL COMPONENT ENVELOPE

### *Class “A” Documents*

#### Legal Documents

- (a) Valid PhilGEPS Registration Certificate (Platinum Membership) (all pages);  
**Or**

#### Technical Documents

- (e) Statement of the prospective bidder of all its ongoing government and private contracts, including contracts awarded but not yet started, if any, whether similar or not similar in nature and complexity to the contract to be bid; **and**
- (f) Statement of the bidder’s Single Largest Completed Contract (SLCC) similar to the contract to be bid, except under conditions provided under the rules; **and**
- (g) Philippine Contractors Accreditation Board (PCAB) License;  
**or**  
Special PCAB License in case of Joint Ventures;  
**and** registration for the type and cost of the contract to be bid; **and**
- (h) Original copy of Bid Security. If in the form of a Surety Bond, submit also a certification issued by the Insurance Commission;  
**or**  
Original copy of Notarized Bid Securing Declaration; **and**
- (i) Project Requirements, which shall include the following:
- a. Organizational chart for the contract to be bid;
- b. List of contractor’s key personnel (*e.g.*, Project Manager, Project Engineers, Materials Engineers, and Foremen), to be assigned to the contract to be bid, with their complete qualification and experience data;
- c. List of contractor’s major equipment units, which are owned, leased, and/or under purchase agreements, supported by proof of ownership or certification of availability of equipment from the equipment lessor/vendor for the duration of the project, as the case may be; **and**
- (j) Original duly signed Omnibus Sworn Statement (OSS);  
**and** if applicable, Original Notarized Secretary’s Certificate in case of a corporation, partnership, or cooperative; or Original Special Power of Attorney of all members of the joint venture giving full power and authority to its officer to sign the OSS and do acts to represent the Bidder.

#### Financial Documents

- (k) The prospective bidder’s audited financial statements, showing, among others, the prospective bidder’s total and current assets and liabilities, stamped “received” by the BIR or its duly accredited and authorized institutions, for the preceding calendar year which should not be earlier than two (2) years from the date of bid submission; **and**
- (l) The prospective bidder’s computation of Net Financial Contracting Capacity (NFCC).



***Class “B” Documents***

- (m) If applicable, duly signed joint venture agreement (JVA) in accordance with RA No. 4566 and its IRR in case the joint venture is already in existence;  
**or**  
duly notarized statements from all the potential joint venture partners stating that they will enter into and abide by the provisions of the JVA in the instance that the bid is successful.

**II. FINANCIAL COMPONENT ENVELOPE**

- (n) Original of duly signed and accomplished Financial Bid Form; **and**

**Other documentary requirements under RA No. 9184**

- (o) Original of duly signed Bid Prices in the Bill of Quantities; **and**
- (p) Duly accomplished Detailed Estimates Form, including a summary sheet indicating the unit prices of construction materials, labor rates, and equipment rentals used in coming up with the Bid; **and**
- (q) Cash Flow by Quarter.

